

# dyson corrale

## User manual



- 
- |   |                                   |   |                                 |
|---|-----------------------------------|---|---------------------------------|
| 2 | Activating your guarantee         | 6 | Charging your straightener      |
| 3 | In the box                        | 6 | Changing settings               |
| 3 | Controls                          | 7 | Looking after your straightener |
| 4 | Using your straightener           |   |                                 |
| 5 | Travelling with your straightener |   |                                 |
| 5 | Assembling the charging dock      |   |                                 |

# Thank you for choosing to buy a Dyson Corrale™ straightener.

To achieve enhanced styling with less reliance on heat, Dyson engineers developed flexing plates. Made from materials selected for their flexibility, strength and thermal conduction, they shape to gather and control hair.

Explore [www.dyson.com/mycorrale](http://www.dyson.com/mycorrale) to:

- Discover styling tips and guides
- Learn about your machine's features
- Activate your 2-year guarantee.

## **Activating your guarantee**

We don't stop caring about our machines once they're yours.

Even when your guarantee has ended, we'll still be on hand to help.

## **Exclusive owner benefits**

- Hassle-free replacement
- Expert advice. 5 days a week.
- Styling tips and guides.

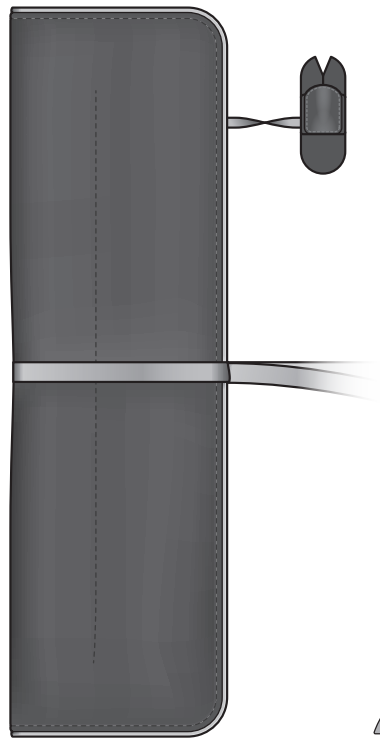
To activate your guarantee, you'll need your serial number, which can be found on the battery pack label.

Go to: [dyson.co.th/en-TH/support/get-the-most-out-of-your-machine](http://dyson.co.th/en-TH/support/get-the-most-out-of-your-machine)

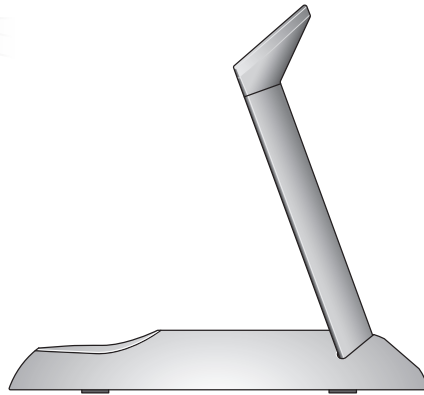
# In the box



Dyson Corrale™ straightener



Heat-resistant travel pouch and Flight-ready tag protector

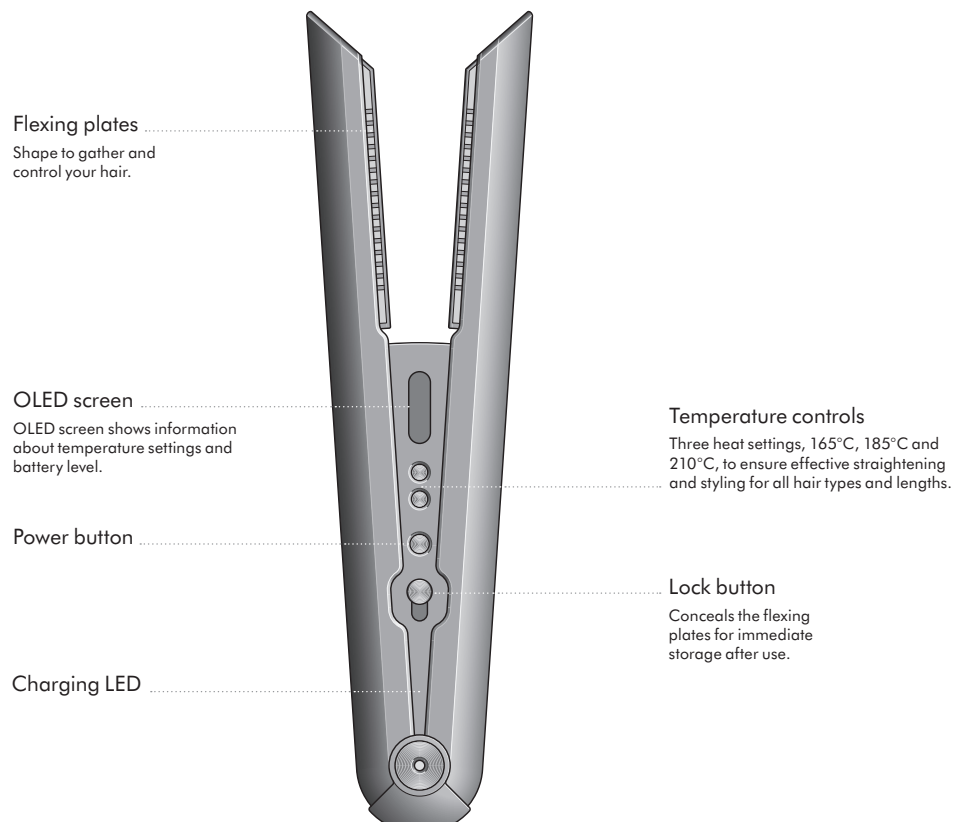


Charging dock



Magnetic 360° charging cable

# Controls



# Using your straightener

## Getting started

Before using your Dyson Corrale™ straightener for the first time, remove the Flight-ready tag from any packaging.

Insert the Flight-ready tag into your straightener.

Fully charge your straightener before first use.

For the best styling results, make sure your hair is dry and tangle-free.



## Turning on

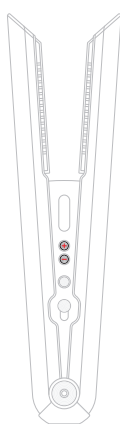
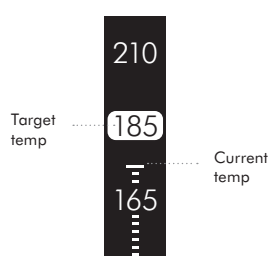
Slide the Lock button to open your straightener.

Press and hold the Power button until a battery icon appears on the OLED screen.

Press the Temperature (+) button to select the temperature you want.

The Power button will pulse red as your straightener heats up.

Your straightener is ready to use when the Power button illuminates red, a prompt sounds and a tick icon appears on the OLED screen.



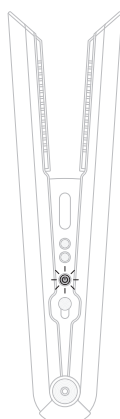
## Adjusting the temperature

Press the Temperature (+/-) control buttons to select the temperature that suits your hair type and styling preference.

Your straightener has three settings, to enable you to style at lower temperatures.

Go to [www.dyson.com/mycorrale](http://www.dyson.com/mycorrale) for styling tips and guides.

The temperature progress will appear on the OLED screen as it heats up or cools down and the Power button will pulse until the selected temperature has been reached.



## Sleep mode

If your Dyson Corrale™ straightener is left unattended with the power on for longer than five minutes, the flexing plates will automatically switch off.

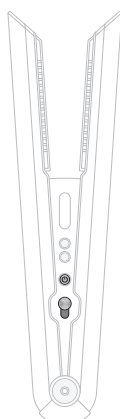
The Power button will flash red and an alert will sound every 10 seconds.

Press any button to reactivate your straightener.

The temperature will increase to the last setting used.

If your straightener is left unattended with the power on for a further five minutes, it will turn off completely.

Go to [www.dyson.com/mycorrale](http://www.dyson.com/mycorrale) for styling tips and guides.



## Turning off

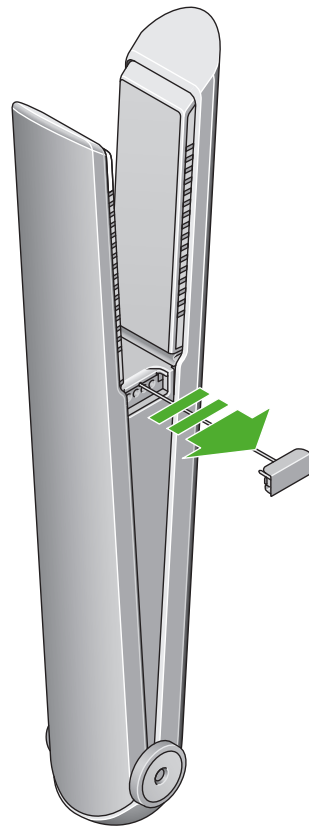
Press and hold the Power button until the OLED screen turns off.

Close your straightener and slide the Lock button to close.

The Power button will pulse until the flexing plates have cooled.

If you close your straightener without turning the power off, it will turn off automatically.

# Travelling with your straightener



## Getting ready to fly

The Dyson Corrale™ straightener is designed to meet ICAO regulations, allowing you to carry it on board an aircraft.

### Before flying:

- 1 Contact your airline in advance to inform them about the Flight-ready feature.
- 2 Remove the Flight-ready tag before airport security and leave disconnected throughout the flight.
- 3 Store your straightener in your hand luggage.

**Please note:** Regulations in Japan mean you will not be able to fly in or out of any Japanese airports with your straightener.

For more information about being flight-ready go to [www.dyson.com/mycorrale](http://www.dyson.com/mycorrale).

When the Flight-ready tag is removed, all controls will be disabled. If you try to use your straightener when flight-ready, an aeroplane icon will appear on the OLED screen.

If the aeroplane symbol doesn't appear on the OLED screen when the Flight-ready tag is removed, contact Dyson before travelling.

Place the Flight-ready tag in the Flight-ready tag protector to prevent damage to the tag and straightener.

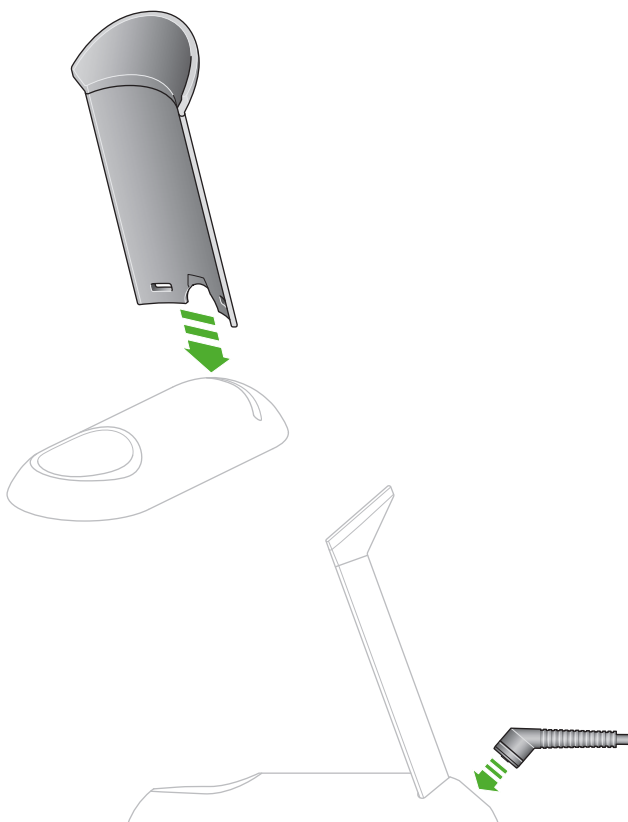
### Charging when travelling

Just check if you need a travel adaptor. The Magnetic 360° charging cable is suitable for use with all mains electricity supplies.

### Reactivating your straightener

Insert the Flight-ready tag back into your straightener.

# Assembling the charging dock

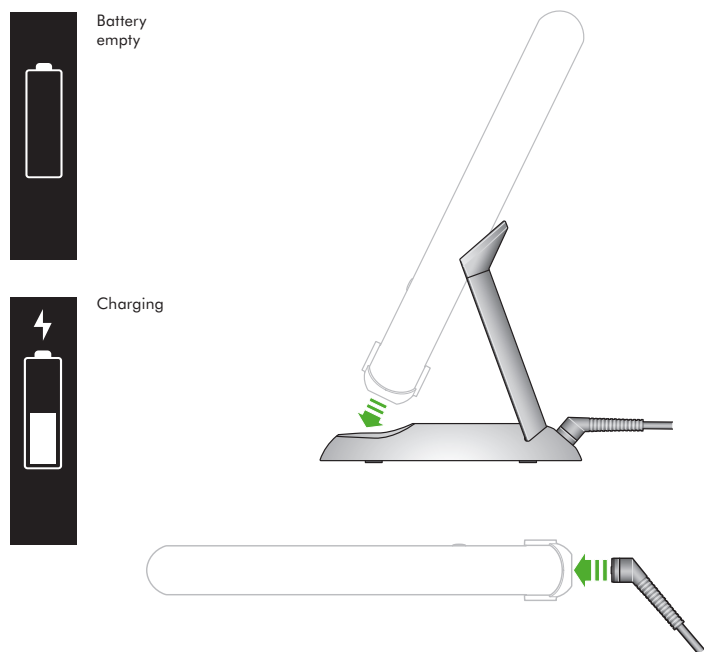


Your dock can be used as a charging dock or a stand to store your Dyson Corrale™ straightener.

Push the two parts of the charging dock together until they click securely in place.

Connect the Magnetic 360° charging cable to the base of the charging dock.

# Charging your straightener



For the best performance, always fully charge your Dyson Corrale™ straightener between uses.

When your straightener needs charging, the battery icon on the OLED screen will flash and a prompt will sound.

When the battery is empty, the battery icon will flash and a prompt will sound five seconds before your straightener turns off.

The battery charging LED will be amber when charging and turn green when fully charged.

Charge your Dyson Corrale™ straightener on the dock or directly with the Magnetic 360° charging cable.

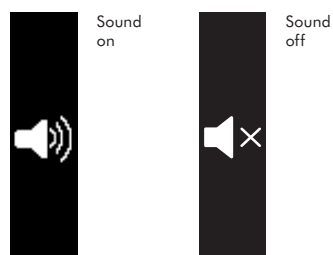
If your straightener is turned off, a prompt will sound when you connect to the Magnetic 360° charging cable.

## Hybrid mode

You can use your straightener with the Magnetic 360° charging cable attached. This will extend the run time but you'll still need to fully charge between uses, as you will still be using battery power when styling.

We recommend that you fully charge your straightener before using in Hybrid mode.

# Changing settings



## Turning the prompt sounds on and off

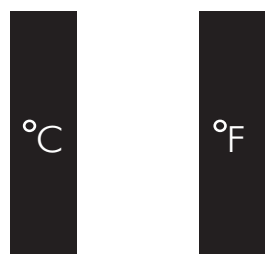
You can mute the prompt sounds during active use.

For your safety, you won't be able to mute the sounds for Sleep mode or alerts.

Press and hold the Power and Temperature (-) buttons to turn the prompt sounds off.

When the speaker icon is crossed through, the prompt sounds will be muted.

Repeat to turn the prompt sound back on.



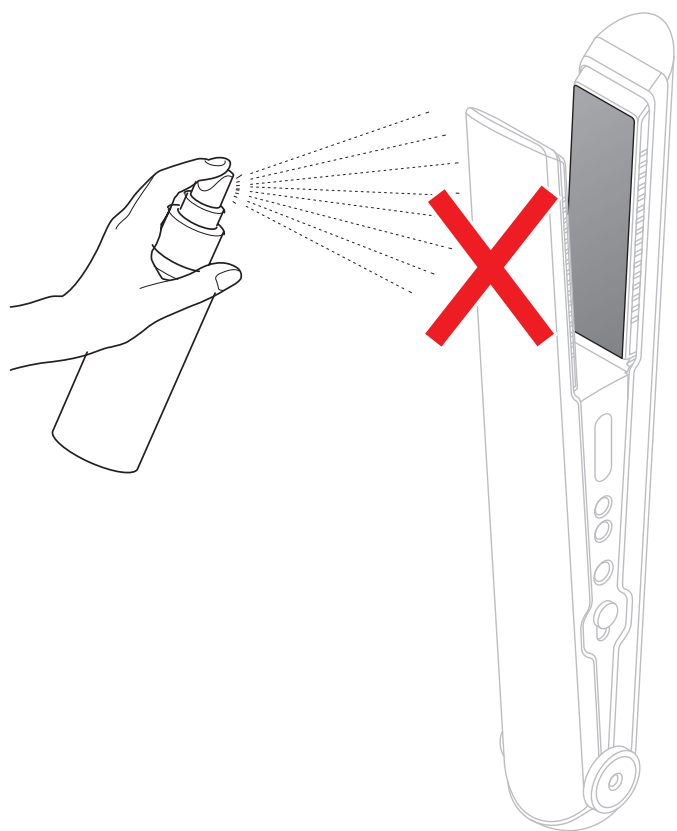
## Changing temperature units

You can select your preferred temperature units (Centigrade or Fahrenheit).

Press and hold the Power and Temperature (+) buttons to change between units.

When your preferred temperature unit shows on the OLED screen, release the buttons.

# Looking after your straightener



Turn off your Dyson Corrale™ straightener and leave to cool before cleaning.

Clean the flexing plates with a damp, lint-free cloth. Rub gently to remove any stubborn hair product residue.

Don't use chemicals or abrasive products as this may damage the surface of the flexing plates.

## Alert screens



### Too hot

Turn your straightener off and leave to cool down.



### Reset

Turn your straightener off and then back on again to reset.



### Charger error

The charger isn't working as it should. Please contact the Dyson helpline.



### Call Dyson

Your straightener isn't working as it should. Please contact the Dyson helpline.



If the aeroplane symbol doesn't appear on the OLED screen when the Flight-ready tag is removed, contact Dyson before travelling.