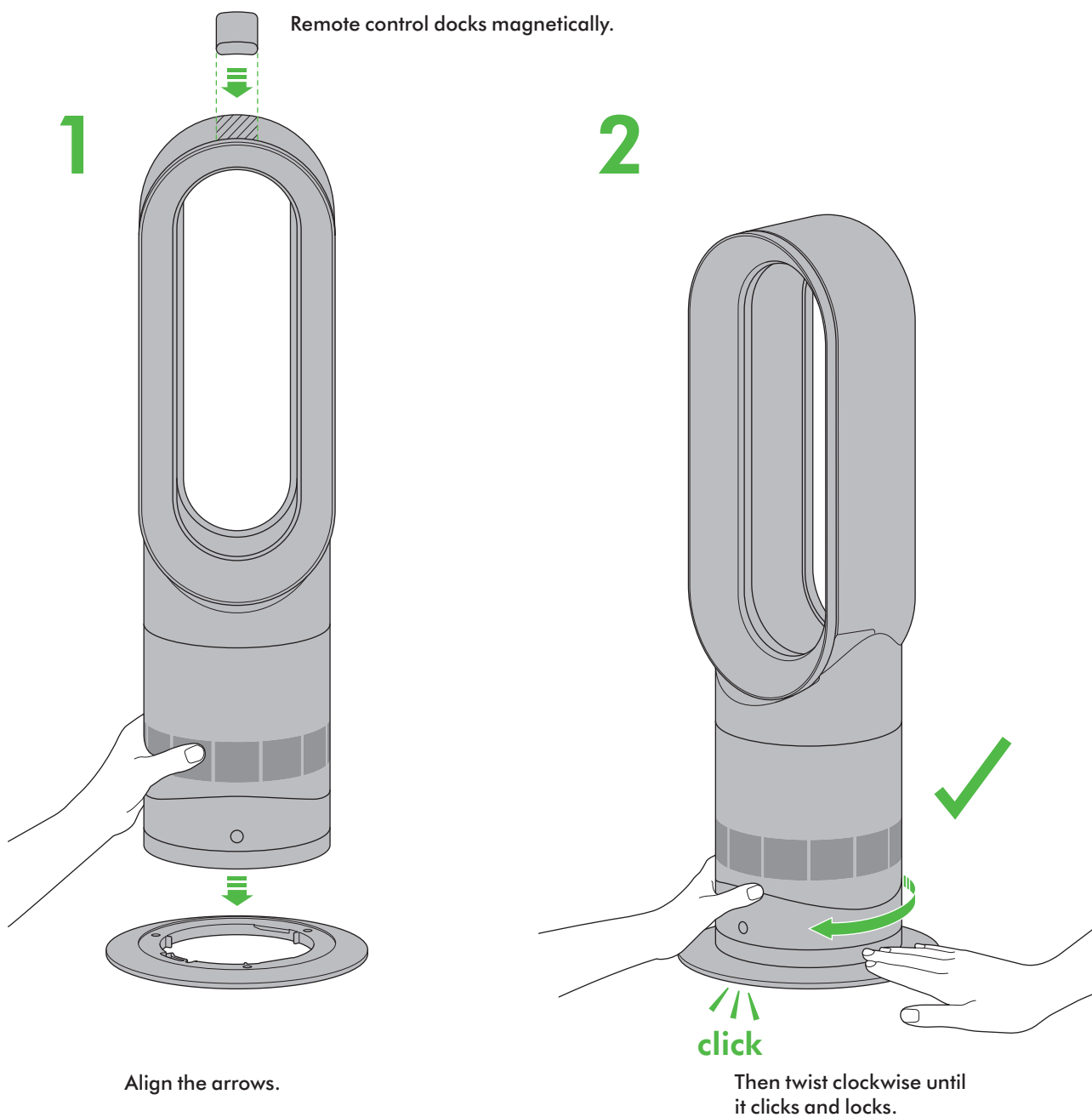


ASSEMBLY



**REGISTER**  
YOUR DYSON 2 YEAR  
GUARANTEE TODAY





## DYSON CUSTOMER CARE

THANK YOU FOR CHOOSING  
TO BUY A DYSON APPLIANCE.

Your Dyson appliance will be covered for parts and labour for 2 years from the date of purchase, as detailed in the terms of the Dyson guarantee in this Dyson Operating Manual.

If you have a query about your Dyson appliance, contact us via the website. Alternatively, call the Dyson Customer Care Helpline quoting your serial number and details of where and when you bought the appliance.

Most queries can be solved over the phone by one of our Dyson Customer Care Helpline staff (details below).

Visit our website to register your Dyson full parts and labour guarantee online, and for online help, support videos, general tips and useful information about Dyson.

AU:

[www.dyson.com.au/support](http://www.dyson.com.au/support)

NZ:

[www.dyson.co.nz/support](http://www.dyson.co.nz/support)

Note your serial number for future reference.



This illustration is for example purposes only.

## 3 EASY WAYS TO REGISTER YOUR DYSON 2 YEAR GUARANTEE

### REGISTER ONLINE

Visit our website to register your Dyson full parts and labour guarantee online.

**AU:** [www.dyson.com.au/register](http://www.dyson.com.au/register)

**NZ:** [www.dyson.co.nz/register](http://www.dyson.co.nz/register)



### REGISTER BY PHONE

Call our dedicated Helpline.

**AU:** 1800 239 766

**NZ:** 0800 397 667



# IMPORTANT SAFETY INSTRUCTIONS

**BEFORE USING THIS APPLIANCE READ ALL INSTRUCTIONS AND CAUTIONARY MARKINGS IN THE USER MANUAL AND ON THE APPLIANCE.**

When using an electrical appliance, basic precautions should always be followed, including the following:



## WARNING

**THE APPLIANCE AND THE REMOTE CONTROL BOTH CONTAIN MAGNETS.**

1. Implanted medical devices such as pacemakers and defibrillators may be affected by strong magnetic fields. If you or someone in your household has an implanted medical device or defibrillator, avoid placing the remote control in a pocket or near to the device.
2. Credit cards and electronic storage media may also be affected by magnets and should be kept away from the remote control and the top of the appliance.



## WARNING

These warnings apply to the appliance, and also where applicable, to all tools, accessories, chargers or mains adaptors.

**TO REDUCE THE RISK OF FIRE, ELECTRIC SHOCK, OR INJURY:**

3. When used in heating mode the appliance is hot when in use and for a short period after use. To avoid burns, do not let bare skin touch hot surfaces. When moving the appliance hold it by the base, not the air loop amplifier.
4. Keep combustible materials, such as furniture, pillows, bedding, papers, clothes and curtains, at least 0.9m (3 feet) from the front of the appliance and keep them away from the sides and rear when the appliance is plugged in.
5. This appliance is not intended for use by persons (including children) with reduced physical, sensory or mental capabilities, or lack of experience and knowledge, unless they have been given supervision or instruction by a responsible person concerning use of the appliance to ensure that they can use it safely.
6. Use only as described in the Dyson User manual. Do not carry out any maintenance other than that shown in the manual, or advised by the Dyson Helpline. Any other use not recommended by the manufacturer may cause fire, electric shock, or injury to persons.
7. The base must be fitted securely before operating. Do not dismantle or use without the base fitted.
8. Do not allow to be used as a toy. Close attention is necessary when used by or near children. Children should be supervised to ensure that they do not play with the appliance or remote control.
9. Suitable for dry locations ONLY. Do not use outdoors or on wet surfaces. Do not use in bathrooms, laundry areas or similar indoor locations. Never locate the appliance where it may fall into a bath or other water container. Do not use or store where it may get wet or in the immediate surroundings of a bath, a shower, or a swimming pool.
10. This appliance has hot parts inside. Do not use it in areas where petrol, paint, or flammable liquids are used or stored or where their vapours are present. Do not use in conjunction with or directly next to an air freshener or similar products.
11. Do not locate directly below a mains electricity supply socket.
12. Always plug directly into a wall socket. Never use with an extension cable as overloading may result in the cable overheating and catching fire.
13. Do not handle any part of the plug or appliance with wet hands.
14. Do not use with a damaged cable or plug. If the supply cable is damaged it must be replaced by Dyson, its service agent or similarly qualified persons in order to avoid a hazard.
15. Do not unplug by pulling on the cable. To unplug, grasp the plug, not the cable.
16. Do not stretch the cable or place the cable under strain. Keep cable away from heated surfaces.
17. Do not run cable under carpeting. Do not cover cable with throw rugs, runners or similar coverings. Arrange cable away from traffic areas and where it will not be tripped over.
18. To prevent a possible fire, do not use with any opening or exhaust blocked, and keep free of dust, lint, hair, and anything that may reduce airflow. Do not put any object into the inlet grille or the exhaust opening as this may cause an electric shock or fire, or damage the appliance.
19. Do not use on soft surfaces, such as a bed, where openings may become blocked.

- 20. In order to avoid overheating, do not cover the heater.
- 21. For the best performance, place on the floor, in the corner of the room, at least 1m from any wall and facing into the centre of the room.
- 22. Turn off all controls before unplugging.
- 23. Do not use any cleaning agents or lubricants on this appliance. Unplug before cleaning or carrying out any maintenance.
- 24. If there is a loose fit between the plug and the socket or the plug becomes very hot, the socket may need to be replaced. Check with a qualified electrician to replace the socket.
- 25. **WARNING.** Chemical Burn and Choking Hazard. Keep batteries away from Children (whether the battery is new or used). This product contains a lithium button/coin cell battery. If a new or used lithium button/ coin cell battery is swallowed or enters the body, it can cause severe internal burns and can lead to death in as little as 2 hours or less. Always completely secure the battery compartment. If the battery compartment does not close securely, stop using the product, remove the batteries, and keep it away from children. If you think a battery might have been swallowed or placed inside any part of the body, seek immediate medical attention. The button/coin battery is located inside the remote control.
- 26. If the appliance is not working as it should, if it has received a sharp blow, if it has been dropped, damaged, left outdoors, or dropped into water, do not use and contact the Dyson Helpline.
- 27. Contact the Dyson Helpline when a service or repair is required. Do not disassemble the appliance as incorrect reassembly may result in an electric shock or fire.
- 28. Do not use this appliance if it has been dropped or if it has visible signs of damage.
- 29. Always use this appliance on a horizontal and stable surface.

## IMPORTANT SAFETY FEATURES

For your safety this appliance is fitted with automatic cut-out switches that operate if it tips over or overheats. If the switches operate, unplug the appliance and allow it to cool. Before restarting, check and clear any blockages and ensure that the appliance is on a solid level surface.

## READ AND SAVE THESE INSTRUCTIONS

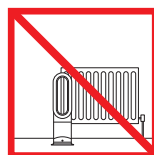
THIS DYSON APPLIANCE IS INTENDED FOR HOUSEHOLD USE ONLY



Do not pull on the cable.



In order to avoid overheating and fire hazard, do not cover the appliance.



Do not store near heat sources.



Do not carry by the air loop amplifier. The air loop amplifier is not a handle.



Do not use near naked flames.

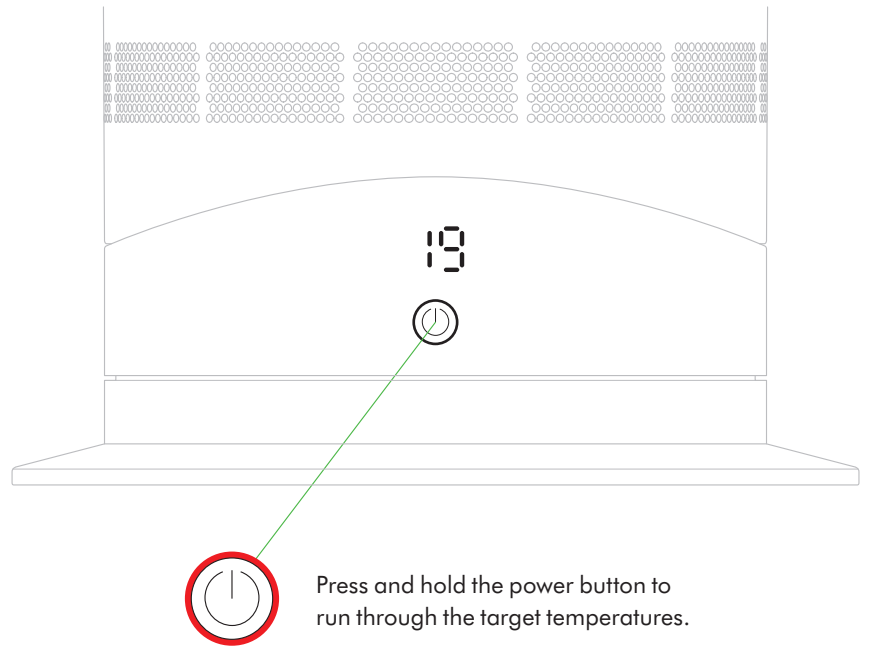
## Power



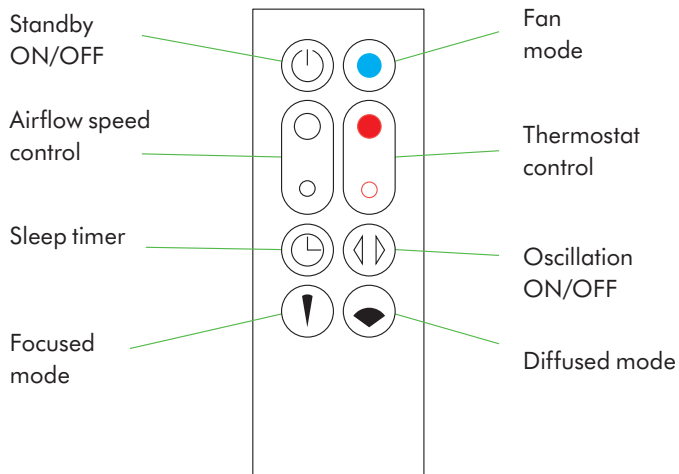
Each time the heating mode is selected, it conducts a short calibration cycle. Airflow will be automatically controlled during this cycle. Once the calibration cycle is complete, it will revert to the selected airflow speed.

On first use, the appliance will default to a temperature 3°C higher than the detected room temperature. Thereafter, the appliance will remember the last target temperature set.

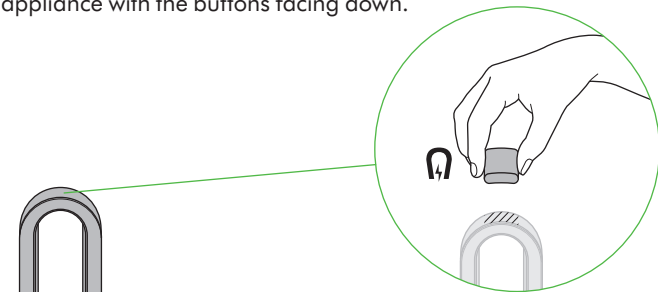
Select the desired room temperature. Pressing the large red button increases the target temperature by 1°C; the smaller red button decreases it by 1°C. The appliance will not operate in heating mode unless the target temperature is above the room temperature.



## Remote control



**Remote control docks magnetically.**  
Attach the remote control to the top of the appliance with the buttons facing down.



To operate, point the remote control toward the front of the base.

## Heating and fan modes



### Heating mode

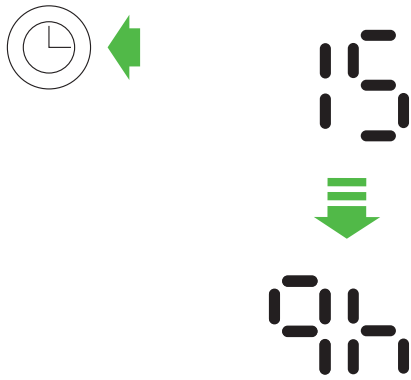
Press the red thermostat control button until the digital display shows the target room temperature. The power button light will change from blue to red to indicate that you have entered heating mode. The red circle will disappear when the target room temperature is reached. Once the target room temperature has been reached, the appliance will stop heating the air. If the room temperature falls below the target room temperature, the appliance will start to heat again.



### Fan mode

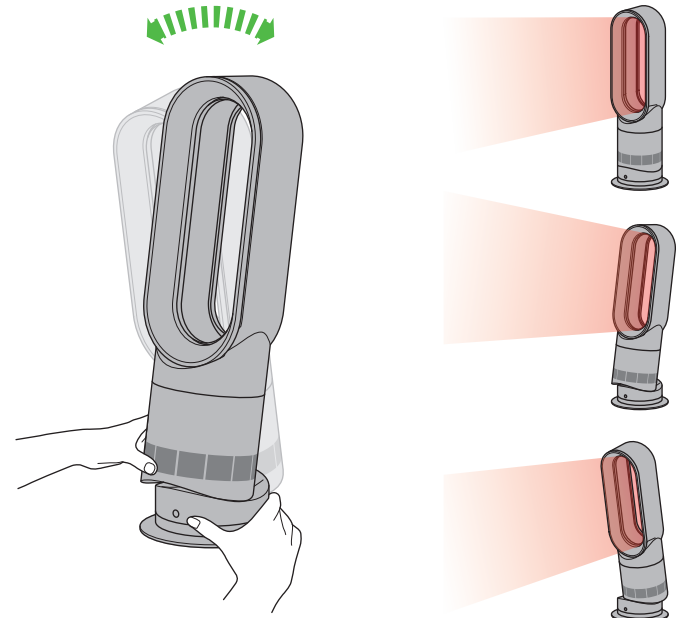
Press the blue fan mode button to cool you. The power button light will change from red to blue to indicate that you have entered fan mode. To adjust the airflow speed use the airflow control button.

## Sleep Timer



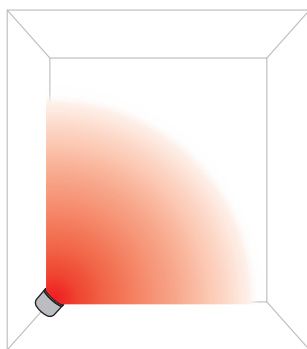
To set the sleep timer, press and hold the timer button to select the desired time. When time reaches zero, the appliance will go into standby mode. To cancel, reduce the time until two dashes appear.

## Tilt function



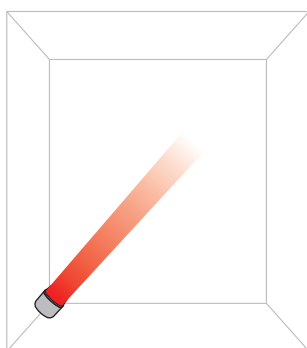
Carefully hold the base and the main body. Tilt the amplifier forward or backward for the required airflow angle.

## Diffused and focused modes



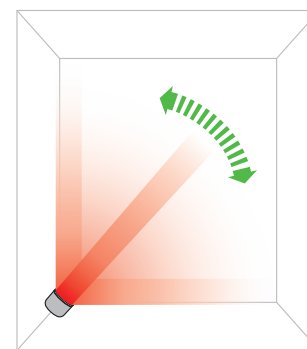
**Diffused mode**  
Press the wide angle button to change from a personal directed airflow to a whole room airflow.

Heating and fan modes work in this mode.

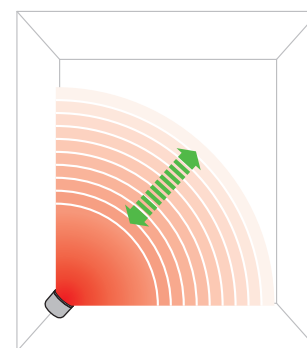
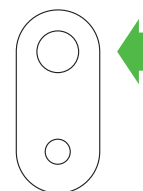


**Focused mode**  
Press the narrow angle button to change from a whole room airflow to a personal directed airflow. Heating and fan modes work in this mode.

## Oscillation and airflow speed control

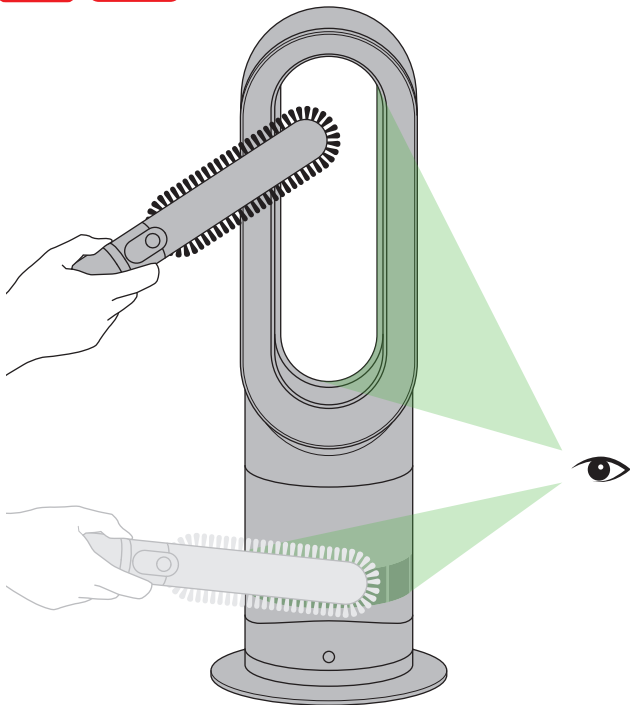


**Oscillation control**  
To start the appliance oscillating, press the oscillation control button. To stop the appliance oscillating, press it again. The appliance will not oscillate when the control buttons are pressed.



**Airflow speed control**  
To change the airflow speed press the airflow control button. The digital display will show the new speed; after 3 seconds it will change back to the target temperature.

### Clearing blockages



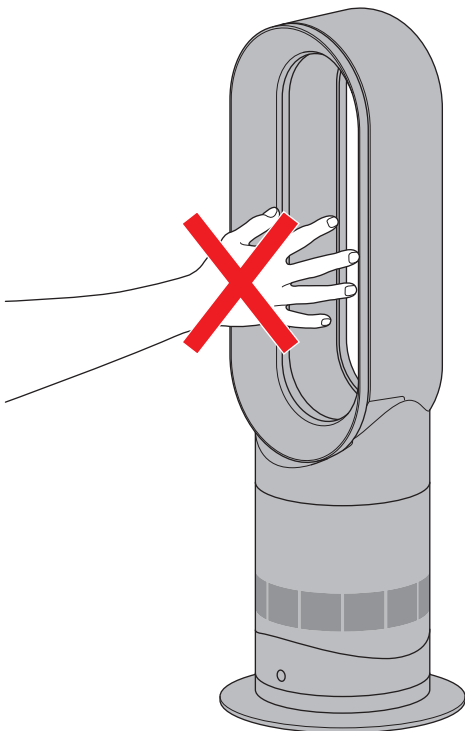
Ensure that the appliance is unplugged. If the appliance has been in use, leave for 1 to 2 hours in order to allow the appliance to cool down completely. Look for blockages in the air inlet holes and in the small aperture inside the air loop amplifier. Use a soft brush to remove debris.

### Cleaning



Unplug from the mains electricity supply. If the appliance has been in use, leave for 1 to 2 hours before cleaning to allow the appliance to cool completely. To clean, wipe with a dry or damp cloth. Do not use detergents or polishes.

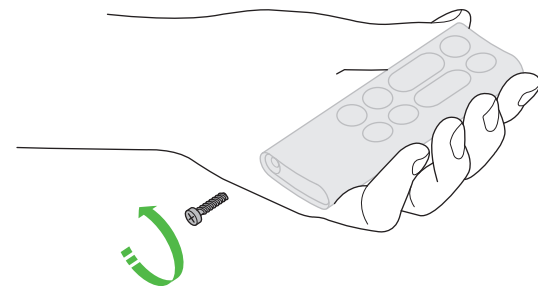
### CAUTION: hot when in use



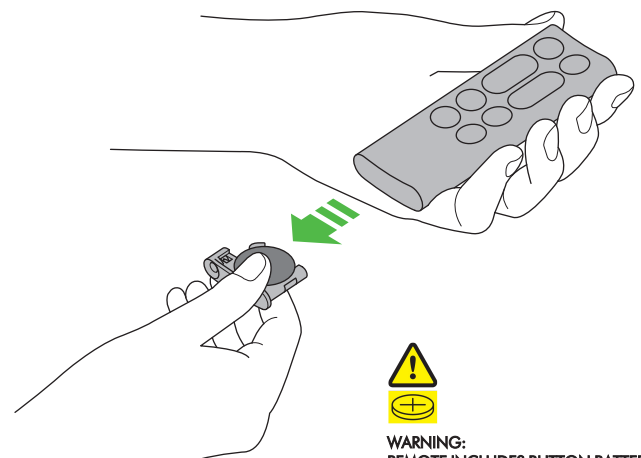
This appliance is hot when in use and for a short period after use. Do not let bare skin touch hot surfaces. If children are present, consider positioning the appliance out of their reach.

### Battery replacement

Battery type CR 2032.



Unscrew the battery compartment on the remote control. Loosen the base and pull to remove the battery.





## USING YOUR DYSON APPLIANCE

PLEASE READ THE 'IMPORTANT SAFETY INSTRUCTIONS' IN THIS DYSON OPERATING MANUAL BEFORE PROCEEDING.

### LOOKING AFTER YOUR DYSON APPLIANCE

- Do not carry out any maintenance or repair work other than that shown in this Dyson Operating Manual, or advised by the Dyson Helpline.
- Always disconnect the plug from the mains before inspecting for problems. If the appliance will not operate, first check that the mains socket has an electricity supply and that the plug is properly inserted into the socket.

### OPERATION

- Ensure that the appliance is fully assembled in line with the instructions before use. Do not dismantle the appliance or use without the loop amplifier fitted.
- The appliance will not operate in heating mode unless the target temperature is above the room temperature.
- Each time the heating mode is selected, it conducts a short calibration cycle. Airflow will be automatically controlled during this cycle. Once the calibration cycle is complete, it will revert to the selected airflow speed.
- The appliance will not oscillate when the control buttons are pressed.
- Do not lubricate any part of this appliance.

### CONTROL WITHOUT THE REMOTE

- Press the Standby button on the appliance to turn ON/OFF.
- Press and hold the Standby button on the appliance to adjust the target temperature. The target temperature will increase to a maximum before decreasing. If the target temperature is set at 0°C it will switch from heating to fan mode.
- The airflow, diffused and personal heating modes, oscillation function and sleep timer controls cannot be operated without the remote control.

### TILT FUNCTION

- Carefully hold the base and the main body. Tilt the amplifier forward or backward for the required airflow angle.

### AUTOMATIC CUT-OUT

- For your safety this appliance is fitted with automatic cut-out switches that operate if the appliance tips over or overheats. If the switches operate, unplug the appliance and allow it to cool. Before restarting the appliance check and clear any blockages and ensure that the appliance is on a solid level surface.
- In heating mode the appliance will automatically switch 'OFF' after 9 hours of continuous use and will return to standby mode. To restart the machine, press the power button on either the remote control or the base.

### TROUBLESHOOTING

- Fault codes F4, F5, F6: If one of these appears on the display, unplug the appliance, wait for 30 to 60 seconds and/or plug the appliance into a different socket. If you continue to receive the fault code, please contact the Dyson Customer Care Helpline.
- Fault codes F2, F3, F7: If one of these appears on the display, please contact the Dyson Customer Care Helpline.

### BATTERY REPLACEMENT



#### CAUTION

- Unscrew the battery compartment on the remote control. Loosen the base and pull to remove the battery.
- Do not install backwards or short circuit the batteries.
- Do not attempt to dismantle or charge the batteries. Keep away from fire.
- Always replace the screw in the remote control and refer to the battery hazard in the warning section.
- Follow battery manufacturers' instructions when installing new batteries (battery type CR 2032).
- Limited functionality is available without the remote control (see 'Control without the remote').

### DISPOSAL INFORMATION

Dyson products are made from high grade recyclable materials. Please dispose of this product responsibly and recycle where possible.

When your Dyson appliance reaches the end of its life, we are responsible for its safe disposal. You can send your old Dyson appliance back to us (at our cost) and we will organise for it to be recycled.\*

\*Please note that not all parts are recyclable. Recycling of parts is subject to the capabilities of 3rd party suppliers. Available in Australia only.

Simply:

1. Box up your old Dyson appliance.
2. Take the package to your local post office and send to the address below:

Dyson We Recycle  
Reply Paid 83215  
Dyson Service Centre  
8-10 Mangrove Lane  
Taren Point, NSW 2229

- Keep the used batteries away from children as these can still harm children if swallowed.
- The battery should be removed from the product before disposal.

### DYSON CUSTOMER CARE

#### THANK YOU FOR CHOOSING TO BUY A DYSON APPLIANCE

After registering your 2 year Dyson guarantee, your Dyson appliance will be covered for parts and labour for 2 years from the date of purchase, subject to the terms of the guarantee. If you have any questions about your Dyson appliance, call the Dyson Helpline with your serial number and details of where/when you bought the appliance. Most questions can be solved over the phone by one of our trained Dyson Helpline staff.

Your serial number can be found on your rating plate which is on the base of the appliance.

- If your Dyson appliance needs a service, call the Dyson Customer Care Helpline so we can discuss the available options.

### REGISTERING YOUR DYSON GUARANTEE

To help us ensure that you receive a prompt and efficient service, please register as a Dyson appliance owner. There are three ways to do this:

- Online at [www.dyson.com.au/register](http://www.dyson.com.au/register) (AU) or [www.dyson.co.nz/register](http://www.dyson.co.nz/register) (NZ).
  - Telephone the Dyson Helpline on 1800 239 766 (AU) or 0800 397 667 (NZ).
  - Complete the enclosed form and post it to us.
- This will confirm ownership of your Dyson appliance in the event of an insurance loss, and enable us to contact you if necessary.

### DYSON 2 YEAR GUARANTEE

#### TERMS AND CONDITIONS OF THE DYSON 2 YEAR GUARANTEE

#### WHAT IS COVERED

- The repair or replacement of your Dyson appliance (at Dyson's discretion) if it is found to be defective due to faulty materials, workmanship or function within 2 years of purchase or delivery (if any part is no longer available or out of manufacture Dyson will replace it with a functional replacement part).
- This Dyson guarantee will only be valid if the appliance is used in the country in which it was sold.

#### WHAT IS NOT COVERED

Under your Dyson guarantee, Dyson shall not be liable for costs of repair or replacement of a product incurred as a result of:

- Damage caused by not carrying out the recommended appliance maintenance.
- Accidental damage, faults caused by negligent use or care, misuse, neglect, careless operation or handling of the Dyson appliance which is not in accordance with this Dyson Operating Manual.
- Use of the Dyson appliance for anything other than normal domestic purposes in the country of purchase.
- Use of parts not assembled or installed in accordance with the instructions of Dyson.
- Use of parts and accessories which are not genuine Dyson components.
- Faulty installation (except where installed by Dyson).
- Repairs or alterations carried out by parties other than Dyson or its authorised agents.
- Blockages – please refer to the illustrations and the section 'Clearing blockages' in this Dyson Operating Manual for details of how to look for and clear blockages.
- Normal wear and tear (e.g. fuse etc.).
- Reduction in battery discharge time due to battery age or use (where applicable).
- Whether or not your Dyson guarantee applies, you may have statutory rights and remedies available to you as a consumer. If you are in any doubt as to what is covered by your Dyson guarantee, please call the Dyson Helpline.

#### OTHER TERMS RELATING TO THE DYSON GUARANTEE

- The Dyson guarantee becomes effective from the date of purchase.
- All work will be carried out by Dyson Appliances (Aust.) Pty Limited, Dyson New Zealand Limited (NZ) or their authorised agents.
- Any parts replaced by Dyson or its service agents will become the property of Dyson Appliances (Aust.) Pty Limited or Dyson New Zealand Limited (NZ).
- You must provide proof of (both the original and any subsequent) delivery/purchase before any work can be carried out on your Dyson appliance. Without this proof, any work carried out pursuant to the Dyson guarantee and any associated delivery charges (both to and from us) will be at your cost, subject to your statutory rights and remedies as a consumer. Please keep your receipt or delivery note.
- Whether or not your Dyson guarantee applies, you may have statutory rights and remedies available to you as a consumer. If you are in any doubt as to what is covered by your Dyson guarantee, please call the Dyson Helpline.

#### AUSTRALIAN CONSUMER LAW

In addition to your rights under the Dyson guarantee, we also provide the following statement as required by the Australian Consumer Law: In Australia, your Dyson appliance comes with statutory guarantees that cannot be excluded under the Australian Consumer Law. You are entitled to a replacement or refund for a major failure and for compensation for any other reasonably foreseeable loss or damage. You are also entitled to have your Dyson appliance repaired or replaced if it fails to be of acceptable quality and the failure does not amount to a major failure.

#### NEW ZEALAND CONSUMER LAW

Under the New Zealand Consumer Guarantees Act 1993, if the product is not of acceptable quality but that defect is not substantial, Dyson may choose whether to repair or replace the product. If a repair will be difficult, Dyson may instead provide you with a refund. If a product's defect is substantial or cannot be fixed, you can ask for either a refund, replacement product, or compensation for any reduction in that product's value. You are also entitled to compensation for any other reasonably foreseeable loss caused by that substantial defect.

#### IMPORTANT DATA PROTECTION INFORMATION

#### WHEN REGISTERING YOUR DYSON APPLIANCE

- You will need to provide us with basic contact information to register your appliance and enable us to support your Dyson guarantee.
- When you register, you will have the opportunity to choose whether you would like to receive communications from us. If you opt-in to communications from Dyson, we will send you details of special offers and news of our latest innovations.
- We never sell your information to third parties and only use information that you share with us as defined by our privacy policies which are available on our website [privacy.dyson.com](http://privacy.dyson.com)



## DYSON CUSTOMER CARE

Your Dyson appliance will be covered for parts and labour for 2 years from the date of purchase, as detailed in the terms of the Dyson guarantee in this Dyson Operating Manual.

If you have a query about your Dyson appliance, contact us via the website. Alternatively, call the Dyson Customer Care Helpline quoting your serial number and details of where and when you bought the appliance.

Most queries can be solved over the phone by one of our Dyson Customer Care Helpline staff.

## DYSON CUSTOMER CARE

### Australia

Website: [www.dyson.com.au](http://www.dyson.com.au)

Email: [aucustomer@dyson.com](mailto:aucustomer@dyson.com)

Dyson Customer Care: 1800 239 766 (Mon-Fri 8:00am to 6:00pm EST,

Sat-Sun 8:30am to 4:00pm EST).

Address: Dyson Appliances (Aust.) Pty Limited, PO Box 2175, Taren Point, NSW 2229 Australia.

### New Zealand

Website: [www.dyson.co.nz](http://www.dyson.co.nz)

Email: [nzcustomer@dyson.com](mailto:nzcustomer@dyson.com)

Dyson Customer Care: 0800 397 667 (Mon-Fri 8:30am to 5:00pm).

Address: Dyson New Zealand Limited, Unit 6, 99 Carbine Road, Mount Wellington, Auckland, 1060, New Zealand.





# Register your Dyson machine online



Australia  
[dyson.com.au/register](https://dyson.com.au/register)

New Zealand  
[dyson.co.nz/register](https://dyson.co.nz/register)

## Why register?



### Expert advice

Free phone and live chat support.



### Exclusive owner benefits

Priority access to previews of new Dyson technology, events and offers.



### Hassle-free replacement

The Dyson Guarantee includes replacement of your machine when it can't be repaired. Fast.



### Free Dyson parts and labour

The Dyson Guarantee covers replacement parts or repairs if something goes wrong.



### 'How to' Videos

To help you get the most from your machine. Quick and easy.



### Helpful tips

Tailored reminders that will keep your machine working at its best, for longer.