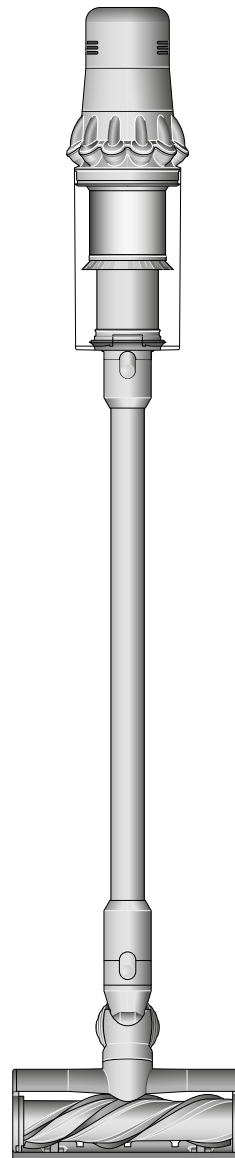


# dyson v15s detect submarine

Dyson V15s detect submarine

## User manual

SV12 JN.00000 PN.000000-00-00  
00.00.00 VERSION NO.01



Top view of the Dyson V15s detect machine, showing cleaner head, wand, bin and main body.

---

## Contents

In the box

Getting started

The LCD screen

Caring for your floors

How to clean your Dyson Submarine wet roller head

How to use your Dyson Submarine wet roller head

Charging your machine

Changing your click-in battery

Emptying your bin

Cleaning your bin

Clearing blockages

Clearing obstructions from your Digital Motorbar™ cleaner head

Clearing blockages from your Hair screw tool

Washing your filter

Washing your Illuminated cleaner head brush bar

Cleaning your tools

Looking after your machine

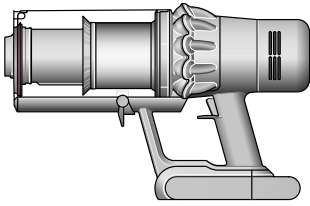
# In the box

Your machine will come with one or more of these cleaner heads – not all will be included.

A soft fluffy brush bar housed within the cleaner head. There is an electrical connector end that can attach to the end of the wand or directly to the machine.

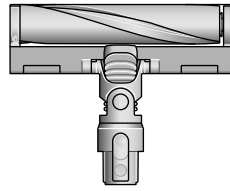
A brush bar located inside the cleaner head and a suction control slider located on the front.

Aerial view of the Submarine wet roller head.



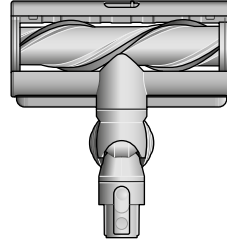
**Vacuum cleaner with click-in battery**

Main body showing the handle and bin attached.



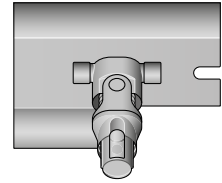
**Illuminated cleaner head**

The illuminated cleaner head makes invisible dust visible on hard floors.



**Digital Motorbar™ cleaner head**

Dyson DLS™ technology monitors brush bar resistance and adapts power across different floor types. De-tangling vanes automatically clear wrapped hair from the brush bar as you clean.



**Submarine wet roller head**

Motorized wet roller removes dust, dirt, spills and tough stains from hard floors



**Wand**

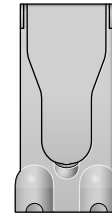
The narrow connector end at the top, this connects to the bin and the wider end at the bottom that connects to the cleaner head or tool.



The charger is a one piece unit with the plug, connector end and cable.

**Charger**

Charges your vacuum with or without a dock.



A rectangular dock that needs to be fixed to a wall with screws.

**Wall dock**

The Dyson cordless vacuum drops into the wall-mounted charging dock, ready for your next clean.

Some tools may not be included.

You can buy additional tools at [www.dyson.com](http://www.dyson.com).

This tool has a combination of brush head and crevice tool together in one unit. The brush head slides down the crevice tool when needed.



**Combination tool**

Two tools in one – wide nozzle and brush, for quick switching between cleaning and dusting tasks around your home or car.



A long tool with an angled end.

**Crevice tool**

Engineered for precise cleaning around tricky edges and into hard-to-reach narrow spaces.

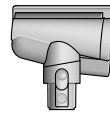


A flexible hose engineered from tough wire and durable plastic.

**Extension hose**

Adds up to 24 in of flexible reach to any tool attachment, to clean up high or down low in your home or car.

A small cleaner head with an angled body housing the motor and an electrical connector to attach to the wand or directly to the machine.



**Hair screw tool**

Anti-tangle conical brush bar spirals hair off and into the bin. Motor-driven cleaning for smaller spaces.



With an elbow joint, fitted between the bin and the tool.

**Low-reach adaptor**

Bends to comfortably reach down low. Engineered to clean further under low furniture by adjusting the wand angle up to 90°.



A long tool with an angled end.

**Light pipe crevice tool**

Crevice tool with LED lights lets you reach into dark, narrow spaces and see where you're cleaning.



Pliable bristles and felt bumper strip on a narrow, tapered tool.

**Soft dusting brush**

Enclosed in a skirt of soft nylon bristles for gentle, vacuum-assisted dusting of delicate objects and surfaces.



A short nozzle with stiff bristles on the underside.

**Stubborn dirt brush**

Stiff nylon bristles dislodge ground-in dirt from coarse carpets, high traffic areas and car interiors.

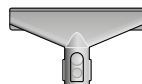


A flexible joint between the machine and the tool. It must be used in conjunction with a tool or cleaner head.

**Up-top adapter**

Bends and locks at different angles. Fits any compatible tool for effective cleaning in hard-to-reach high areas of your home.

A wide, triangular shaped nozzle.



**Fabric and mattress tool**

Removes dust, dirt and allergens from mattresses and upholstery.

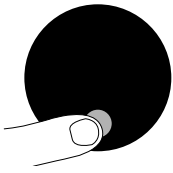
A plastic clip that attaches to the wand



**Wand clip**

Clips to your vacuum's wand to hold tools.

# Getting started



## Power modes

Your machine has three power modes for different tasks. Change power modes quickly using a single button.



The screen showing the machine set to Eco mode with a full battery in green to show that this will give the longest battery life of the three modes.

## Eco mode

Maximum run time for longer cleans all around your home.



Two screens showing the machine set to Auto mode and Med mode with a blue battery showing that this will give a medium length of battery life.

## Auto and Med mode

The optimum balance of power and run time. Attach your cleaner head or Hair screw tool to activate Auto mode. Suction power automatically adapts to dust levels.



The screen showing the machine set to Boost mode with a red battery to show that this will give the shortest battery life of the three modes.

## Boost mode

Designed for intensive spot cleaning of ground-in dirt.

Location of the Selection button on the screen on the filter end of the machine.

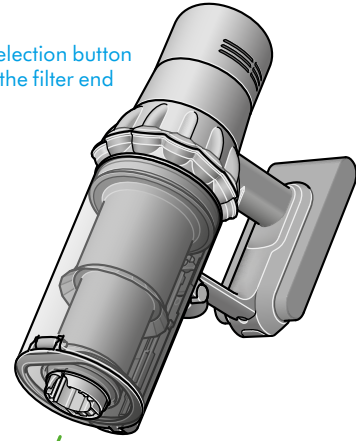
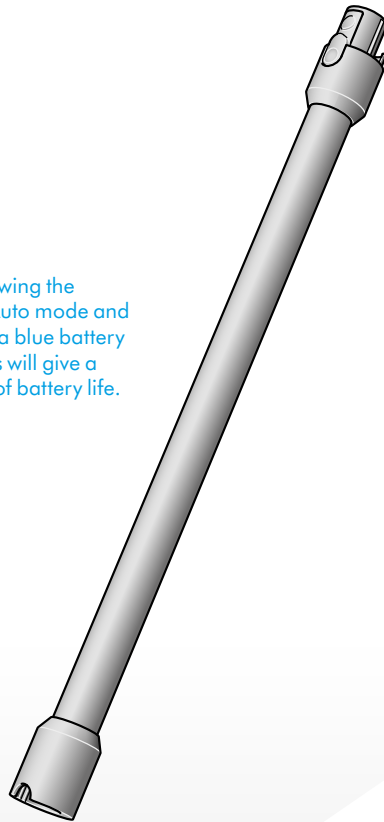
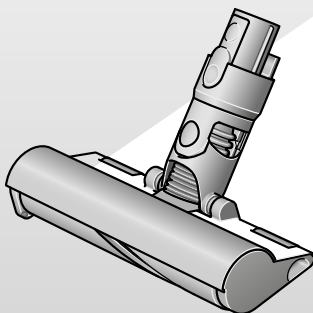


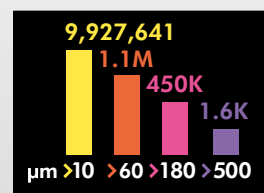
Diagram showing the connection of the wand onto the main body, with the wand release button aligned with the top of the main body.



Arrow showing the end of the wand connecting to the cleaner head.



The screen, on the end of the main body, showing a graph of the sizing and counting of the dust particles.



## Measures microscopic dust particles

A piezo sensor continuously sizes and counts dust particles at the inlet. Attach your cleaner head or Hair screw tool and use in Auto mode to automatically increase suction power when needed.

# The LCD screen

The LCD screen shows your particle count information and performance, including the cleaning mode selected, remaining run time, filter maintenance and blockage information.

---

## Settings menu

Control the settings on your machine using the Selection button. To enter the settings menu, press and hold the button until the menu screen appears. Tap to scroll through the options available.

## Particle count and graph

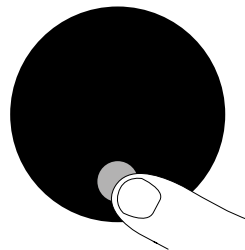
Select to turn the measuring and counting of particles on and off. Turn off the measuring and counting of particles to stop your machine automatically adjusting suction power and turn off the graph.

Automatic adjustment between hard floors and carpets will continue, when using the Digital Motorbar™ cleaner head.

## Adjust reactive suction power sensitivity.

Use the selection button to change how sensitive the particle count is. This will change how your machine automatically reacts to the dust particles.

For more information and support videos for your machine go online: [www.dyson.com/support](http://www.dyson.com/support)



The Selection button on the screen being pressed.

---

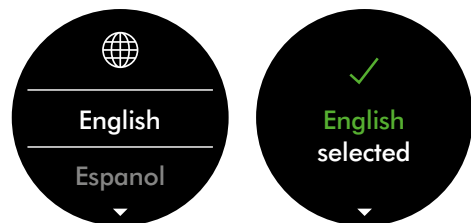
## Change language

To change the language on your screen, press the button and hold until the language list appears. Release the button.

Tap the button to scroll through the language list to your preferred language. Press and hold the button until the countdown ends.

A green tick will appear on the screen to show your language selection is complete.

To cancel your selection, release the button during the countdown.



Two screens, the first with the language list and then the tick screen to show that the language has been successfully changed.

---

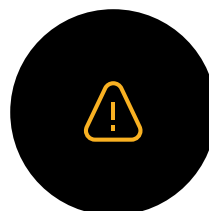
## Change alert settings

You can turn the alert motor pulse off. Your motor will no longer pulse but run time alert information will continue to be displayed on the LCD screen when your machine needs your attention.

Turning off alerts will not turn off the blockage alert pulsing. This is to ensure you clear any blockages, preventing damage to your machine.

Tap to scroll through the settings menu. Select the 'Alerts' option.

Scroll to select on or off. Hold the button until the countdown ends and a tick appears on the screen. To cancel your selection, release the button during the countdown



The screen with an amber warning triangle to demonstrate an alert.

### Run time countdown

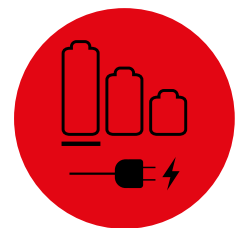
When the battery needs charging, your machine will pulse three times and a low run time icon will appear on the screen.

When your battery is empty, a red warning icon will appear on the screen.

When Particle count and graph is turned on, low run time will be in amber and red when in Boost mode.



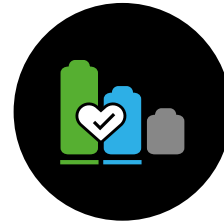
The screen with a battery time remaining shown as a number and as a half filled battery.



A red screen with an icon with a plug being connected to the power supply. This demonstrates the battery is empty and needs charging.

### Battery health

To get the best performance and life from your battery, use Eco or Auto/Med mode.



The battery health is shown on the batteries on the screen.

### Alerts

The alerts you might see are:

Filter – the filter isn't fitted correctly, or needs cleaning.

Blockage – your machine has a blockage that needs removing.

Alert icon with Fully charge before first use wording.



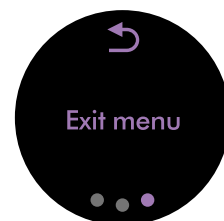
Alert icon with Airways blocked wording.

Alert icon with Filter not sealed wording.



Alert icon with Filter needs cleaning wording.

### Exit settings menu



Screen with Exit menu wording and return icon.

# Caring for your floors

Check that the underside of the cleaner head or tool is clean and free from any objects that may cause damage.

Before vacuuming your flooring, rugs, and carpets, check the manufacturer's recommended cleaning instructions.

The brush bar on your machine can damage certain carpet types and floors. Some carpets will fuzz if a rotating brush bar is used when vacuuming. If this happens, we recommend vacuuming without the motorized floor tool and consulting with your flooring manufacturer.

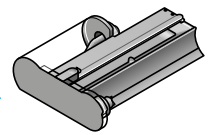
# How to clean your Dyson Submarine wet roller head

## Step 1

Turn off your machine and detach the Dyson Submarine wet roller head from the wand. Place it in the drip tray immediately to prevent dirty water spillage.

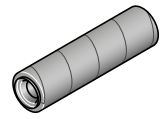
A green arrow indicating how the wand detaches from the Dyson Submarine wet roller head, and how to put the wet roller head into the drip tray after wet cleaning.

Image of water reservoir and waste extraction tray without wet roller brushbar or drip tray



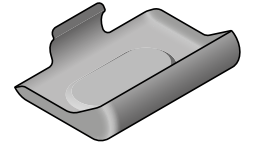
Water reservoir and waste extraction tray

Image of wet roller brushbar



Wet roller

Image of drip tray



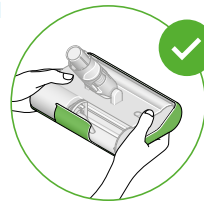
Drip tray

The wet roller head held by the neck without the drip tray. Water is shown dripping from the roller head. A red cross icon indicates incorrect usage.

## Step 2

Hold the wet roller head level in the drip tray.

The wet roller head being placed in the drip tray, held at the sides, with a green tick to indicate correct usage.



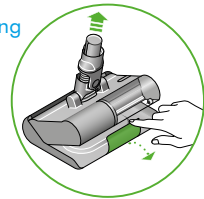
## Step 3

Hold the wet roller head over a sink. Remove it from the drip tray.

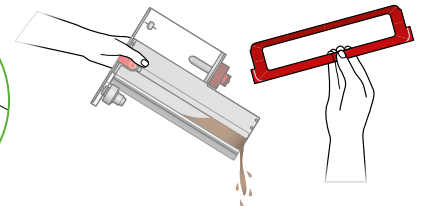
Hold the wet roller head at the edges, press the red Quick-release button and slide out the removable cassette from the main roller head.

Remove the red dirty water tank cap to empty the waste extraction tray.

A hand removing the wet roller head from the drip tray.



A hand removing the red dirty water tank cap and emptying the dirty water and waste.

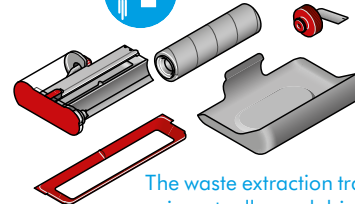


## Step 4

Don't get water on the neck of the wet roller head, as it may damage the connection to the wand.

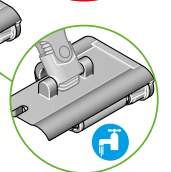
Disassemble the Submarine wet roller head. Every part of the wet roller head can be washed with water and a household anti-bacterial solution diluted according to the manufacturer's recommended ratio.

Empty any leftover water from the water reservoir.



The waste extraction tray, water reservoir, wet roller and drip tray accompanied by blue tap icons.

Red cross indicating the neck cannot be exposed to water. The main roller head with a green circle and water tap means it can be washed with water.



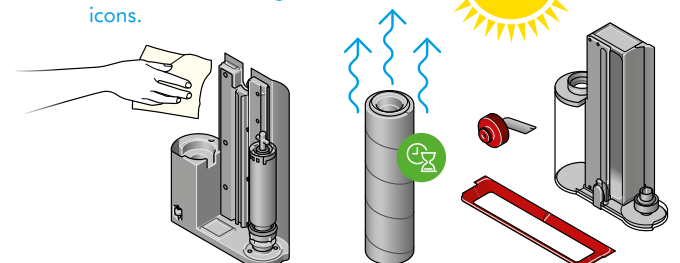
## Step 5

Leave the wet roller to air dry in a warm, well-ventilated space.

Use a cloth to wipe away any dirt or excess water from the main roller head, waste extraction tray and water reservoir.

We recommend replacing the wet roller every six months, depending on how often you use your machine, to help maintain performance.

A hand holding a cloth next to the main roller head, roller, waste extraction tray and water reservoir, with sun, ventilation and hourglass icons.

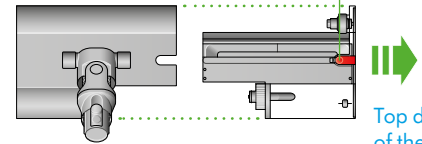
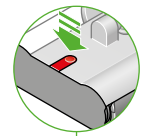


# How to use your Dyson Submarine wet roller head

## Step 1

Hold the wet roller head at the edges, press the red Quick-release button and slide out the removable cassette from the main roller head.

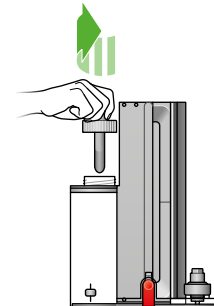
A close-up detail shows the red Quick-release button on the main roller head.



Top down image of the water reservoir with an arrow as it slides apart from the main roller head.

## Step 2

Remove the cap on the water reservoir.



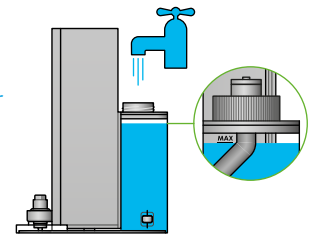
A hand removes the cap from the water reservoir with a counter-clockwise icon.

## Step 3

Fill the water reservoir with clean water to the MAX fill line.

Detergent usage guidance: If you decide to use detergent, please choose gentle, common household detergents, and do not use bleach and high-foaming formulation. Please follow the manufacturers guidance on the recommended dilution on surfaces cleaning - Dyson does not recommend putting undiluted detergents in the clean water tank.

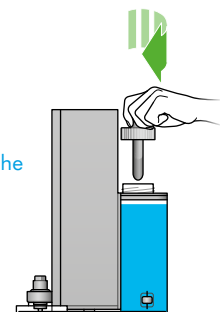
The water reservoir being filled with tap water.



## Step 4

Fit the cap securely on the water reservoir.

A hand replaces the cap on the water reservoir with a clockwise icon.



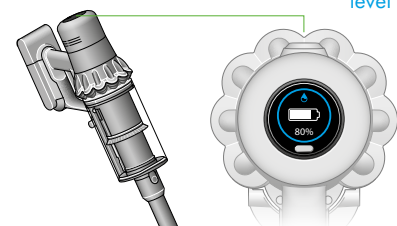
A close-up detail of the LCD screen with the battery level indicator.

## Step 5

Slide the waste extraction tray and water reservoir back into the main roller head until you hear a click. Attach the main wet roller head to your vacuum's wand.

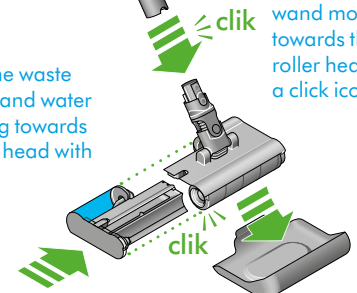
Remaining battery life will be displayed as a percentage on your LCD screen. You can wet clean until the water in water reservoir is running low or until the battery runs out. To continue cleaning, simply empty the waste extraction tray, refill your water reservoir, and resume cleaning.

Do not wet clean with an empty water reservoir to prevent the motor overheating.



Arrows show the waste extraction tray and water reservoir sliding towards the main roller head with a click icon.

Arrows show the wand moving towards the wet roller head with a click icon.





# Charging your machine

It's important to fully charge your new machine before using it for the first time, and after every clean. This is because the battery and monitoring system's algorithm 'learns' over time, and fully charging your machine helps it to more accurately calculate and display remaining run time.

Connect to the charger either directly or in the dock.

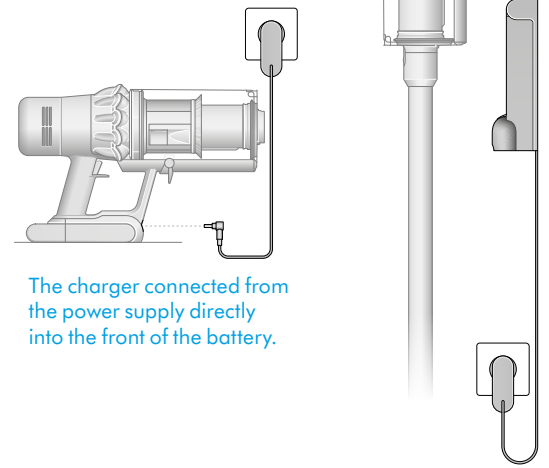
The blue LEDs on either side of the battery will flash during charging.

When the battery is fully charged, both LEDs will light for 5 seconds.

Your battery is fully charged when the display shows 100%.

Your machine won't operate or charge if the ambient temperature is below 5°C (41°F). This is designed to protect both the motor and battery.

The charger connected from the power supply using the wall dock.



The charger connected from the power supply directly into the front of the battery.

# Changing your click-in battery

If you have additional click-in batteries, we recommend that you alternate the batteries to maintain even performance.

## Removing your battery

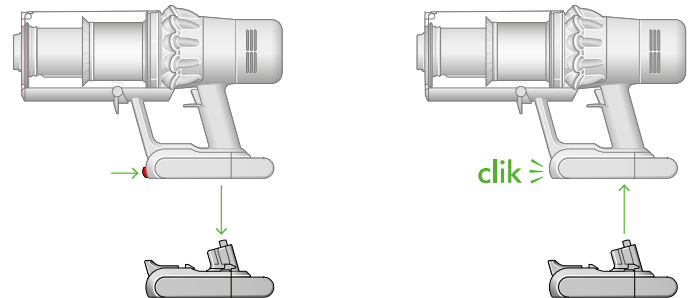
Push the Battery release button on the handle and slide the battery off your machine.

Charge the battery.

## Refitting your battery

Align your battery with the handle and slide it in. Push firmly until it clicks into place.

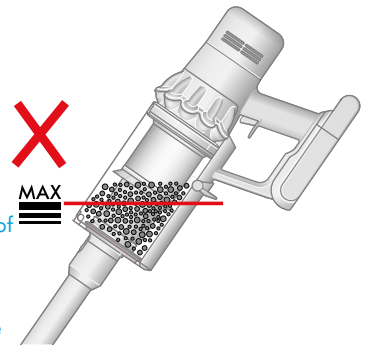
Arrows showing the location of the Battery release button and the battery coming off the handle when the button is pressed. The battery is then shown being replaced on the base of the handle, clicking into place.



# Emptying your bin

Empty as soon as the dirt reaches the MAX level – don't overfill. Using your machine when the dirt is above the MAX line may affect the performance and require more frequent filter washing.

Overfilling your bin could result in inaccurate readings on the particle graph.



The MAX mark on the bin of the machine, showing that the dirt should not be filled over the Max mark when the machine is at the angle of normal use.

## Remove your wand

Press the red wand release button, on the top of the wand, and pull the wand away from the bin.

## Release the dirt

Hold the machine over the bin, pointing downwards.

Firmly push the red bin release button. The bin will slide down, cleaning the shroud as it goes, and the bin base will open.

The bin base won't open if the red bin release button isn't pushed down all the way.

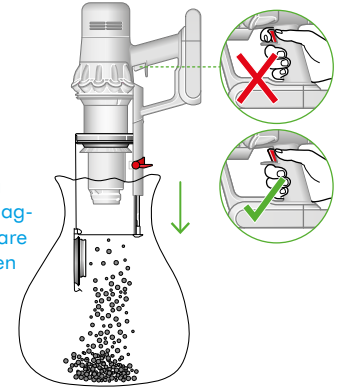


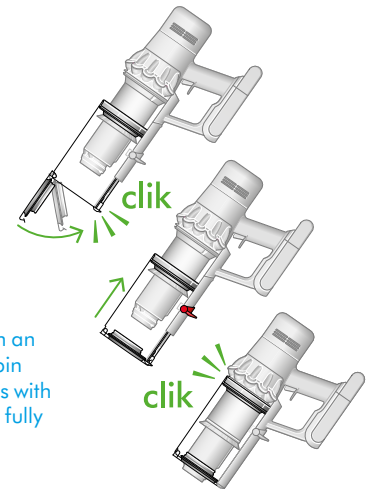
Illustration of the bin being emptied into a bag with images demonstrating to take care not to press the trigger when emptying the bin.

## Minimize dust contact

Cover your bin tightly in a dust proof bag while you empty. Remove your bin carefully, seal the bag tightly and dispose.

## Close the bin

Push the bin base upwards until your bin and bin base click into place.



The bin lid closing with an audible click and the bin being pushed upwards with another click once it is fully in place.

# Cleaning your bin

## Remove your bin

If it is necessary to clean your bin, empty it as shown in the 'Emptying your bin' section.

Press the red button located on the bin runner to release the bin and slide your bin off the runner.

Only use a damp, lint-free cloth to clean your bin.

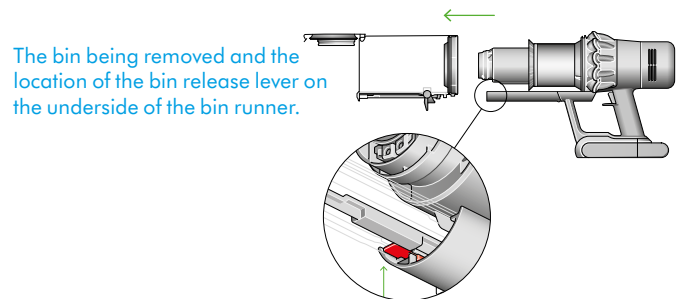
Make sure that your bin and seals are completely dry before replacing.

## Refit your bin

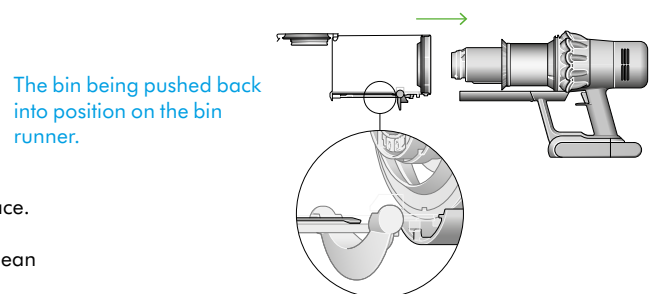
Insert the spine on to the bin runner.

Close your bin by pushing the bin base upwards until the bin and bin base click into place.

Your bin isn't dishwasher safe and the use of detergents, polishes or air fresheners to clean your bin isn't recommended, as it may damage your machine.



The bin being removed and the location of the bin release lever on the underside of the bin runner.



The bin being pushed back into position on the bin runner.

# Clearing blockages

Disconnect your machine from the charger before looking for blockages. Be careful not to touch the trigger and be aware of sharp objects.

Leave your machine to cool down before looking for blockages.

Don't use your machine when looking for blockages as this could cause injury.

If your machine detects a blockage, the motor will pulse and you won't be able to use your machine until the blockage has been cleared.

If you try to use your machine when the motor is pulsing, it will automatically cut out.

## Check the main body

Remove the bin and check for blockages in the main body of your machine.

Make sure any blockages are completely cleared and all parts are fitted before using your machine.

## Check the wand and cleaner head

Check the wand for blockages.

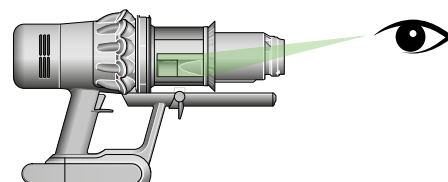
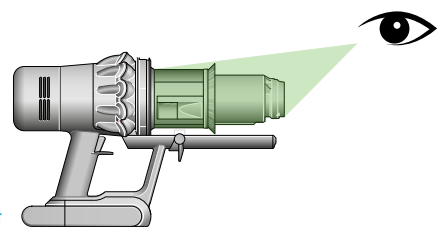
Check your cleaner head for blockages, following the instructions to remove the brush bar, where necessary.

## Re-assemble your machine

Refit all parts securely before using your machine.

Clearing blockages isn't covered by your guarantee.

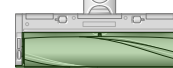
With the bin removed, check for blockages, paying particular attention to the air inlet, located at on the right-hand side of the machine just below the point where the bin joins the main body of the machine.



With the wand removed from the machine, check for blockages at both ends of the wand.



Turn the cleaner head over to check for obstructions on the brush bar and air inlet.



# Clearing obstructions from your Digital Motorbar™ cleaner head

Your Digital Motorbar™ cleaner head doesn't have a washable brush bar. To maintain optimum performance, check your brush bar regularly and clear any obstructions.

Make sure your machine is disconnected from the charger and make sure your machine power is turned off.

## Remove your brush bar

Don't put any part of your machine in a dishwasher or use detergents, polishes or air fresheners.

Press the cleaner head release button on the end of the wand. Place the cleaner head upside down.

Use a coin to unlock the end cap.

Twist the end cap and remove it from your brush bar. Don't wash the end cap.

Slide your brush bar out of the cleaner head.

## Look for obstructions

Clear any debris from your brush bar.

Check inside the cleaner head and remove any debris or blockages.

Your Digital Motorbar™ cleaner head and brush bar aren't washable. Wipe over with a damp lint-free cloth.

Don't put any part of your machine in a dishwasher or use detergents, polishes or air fresheners.

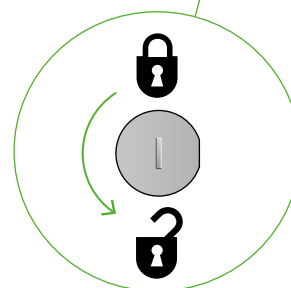
## Replace your brush bar

Push the end cap back on to your brush bar and slide it back into the cleaner head.

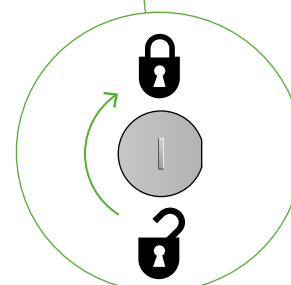
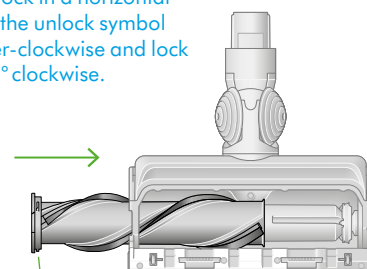
Turn the end cap into the locked position.

Your cleaner head isn't washable and should only be wiped over with a damp lint-free cloth.

The lock located on the side of the cleaner head, is rotated 90° to release the end cap and the brush bar can be removed.



The removal of the brush bars showing the lock in a horizontal position and the unlock symbol at 90° counter-clockwise and lock symbol at 90° clockwise.



# Clearing blockages from your Hair screw tool

Your Hair screw tool doesn't have a washable brush bar. To maintain optimum performance, check your brush bar regularly and clear any obstructions.

Make sure your machine is disconnected from the charger and take care not to touch the trigger.

## Remove the cover and brush bar

Remove the Hair screw tool from the wand or machine.

Push the base plate open. Press the red lever down to release the cleaner head cover.

Pull the cleaner head cover off the main body of the tool.

## Look for obstructions

Pull your brush bar firmly to remove it from the main body.

Check and remove any obstructions from all three parts of your Hair screw tool.

Your Hair screw tool isn't washable. Wipe over with a damp lint-free cloth.

Don't put any part of your machine in a dishwasher or use detergents, polishes or air fresheners.

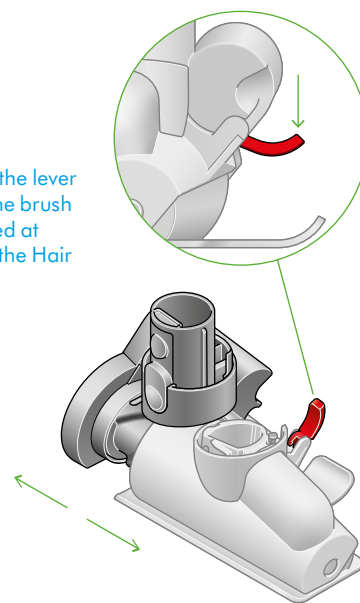
## Re-assemble Hair screw tool

Put your brush bar back into position and press firmly until it clicks back into position.

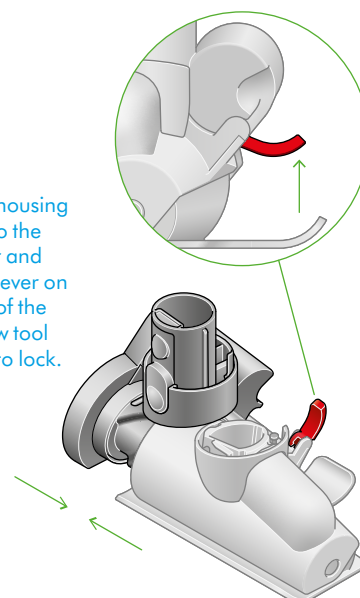
Check the red locking lever is in the unlocked position. Align the cleaner head cover with the guide on the main body. Push it down until it clicks into position.

Push the red locking lever up until it clicks into position and push the base plate back into place.

Location of the lever to release the brush bar is located at the back of the Hair screw tool.



Slide the housing back on to the brush bar and push the lever on the back of the Hair screw tool upwards to lock.



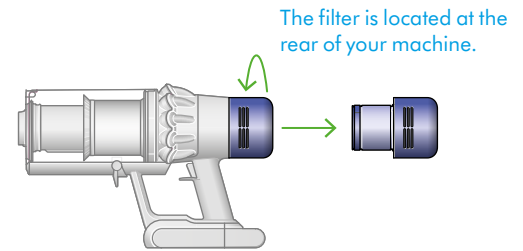
# Washing your filter

Wash your filter at least once a month to maintain optimum suction power.

For more information and support videos for your machine go online: [www.dyson.com/support](http://www.dyson.com/support)

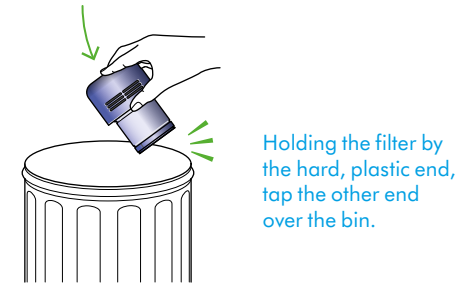
## Twist off your filter

Twist your filter anti-clockwise and pull it away from your machine.



## Tap your filter

Before washing your filter, tap it gently over a bin to remove any loose dust and debris.



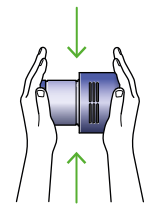
## Wash your filter

Wash with warm, running tap water – gently rubbing your filter with your fingers to remove the dirt.

Filter held in upright position, with the wider end in the palm of a hand. Water running from a tap into the narrower end.



Filter with hand over the open end with arrows showing a shaking motion.



## Fill and shake

Place your hand over one end of your filter.

Fill the filter with warm tap water.

Place your hand over the open end of the filter and shake it firmly to remove trapped dirt and debris.

Repeat these steps until the water runs clear.

## Shake and dry

Empty the filter and shake firmly to remove excess water.

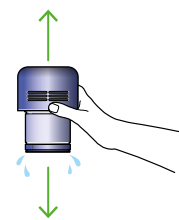
Keep shaking until there's no water coming from the filter.

Place your filter end up, as shown.

Place the filter on its end and leave to dry for at least 24 hours in a well ventilated, warm place.

Don't dry your filter in a tumble dryer, microwave or near a naked flame.

Important: your filter must be completely dry before you put it back into the machine. Your machine could be damaged if used with a damp filter.



A hand holding the filter with the narrow end pointing downwards with droplets of water being shaken from the filter and again, with the end pointing downwards shaking water out.



The filter is left to dry with the pleated filter end facing upwards.

# Washing your Illuminated cleaner head brush bar

Your Illuminated cleaner head has a washable brush bar. To maintain optimum performance, check and wash your brush bar regularly.

Make sure your machine is disconnected from the charger and take care not to touch the trigger.

## Remove your brush bar

Don't put any part of your machine in a dishwasher or use detergents, polishes or air fresheners.

Press the cleaner head release button on the end of the wand. Place the cleaner head upside down.

Push the end cap up fully and pull the brush bar out of the cleaner head.

Remove the end cap from the brush bar. Don't wash the end cap.

Slide your brush bar out of the cleaner head.

## Wash and dry your brush bar

Hold your brush bar under running water and gently rub to remove any lint or dirt.

Stand your brush bar upright as shown. Leave to dry completely for at least 24 hours.

## Replace your brush bar

Before replacing, check that your brush bar is completely dry.

Reattach the end cap to your brush bar.

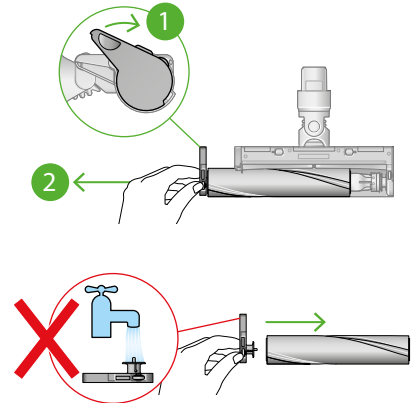
Slide your brush bar into the cleaner head. Push the end cap back down to the closed position.

## Cleaning your optic lens

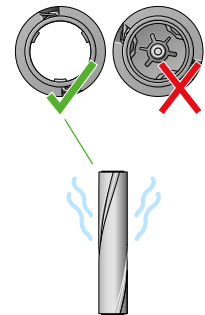
To maintain optimum performance, keep your optic lens clean. Only clean the lens when the cleaner head is not attached to your machine.

Use a soft, dry, lint-free cloth to wipe the lens.

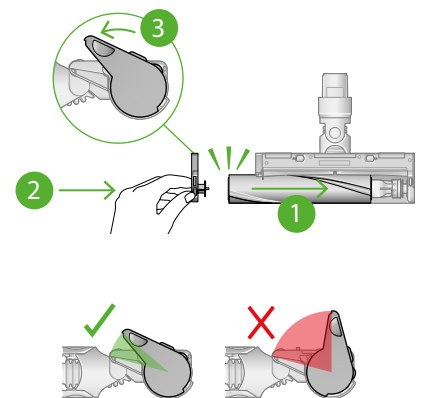
The end cap is located at the side of the cleaner head. Push this upwards to unlock the brush bar. Don't wash the end cap.



The brush bar has an open end and a closed end. Stand upright, with the closed end facing upwards, to dry.



The end cap should be attached to the cleaner head at an angle less than 90°, any angle greater than this will not allow the end cap to close.



# Cleaning your tools

Don't put any part of your machine in a dishwasher or use detergents, polishes or air fresheners.

Wipe with a damp, lint-free cloth, without touching the connector end.

Make sure your tools are completely dry before using.



Combination tool



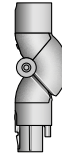
Crevice tool



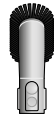
Extension hose



Light pipe crevice tool



Low-reach adaptor



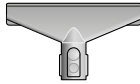
Soft dusting brush



Stubborn dirt brush



Up-top adaptor



Fabric and mattress tool



# Looking after your machine

To always get the best performance from your machine, it's important to clean it regularly and check for blockages.

## **Look after your machine**

If your machine is dusty, wipe with a damp lint-free cloth.

Check for blockages in the cleaner head, tools and main body of your machine.

Wash your filter regularly and leave to dry completely.

Don't use detergents or polishes to clean your machine.

## **Look after your battery**

To get the best performance and life from your battery, use Eco or Auto/Med mode.

Your machine won't operate or charge if the ambient temperature is below 5°C (41°F). This is designed to protect both the motor and battery.

## **Your serial numbers**

You can find your serial numbers on your machine, battery and charger. Use your serial number to register.

For more information and support videos for your machine go online: [www.dyson.com/support](http://www.dyson.com/support)