

User manual



The Dyson machine with the bin, wand and cleaner head.

Contents

In the box

Getting started

Caring for your floors

Charging your machine

Emptying your bin

Cleaning your bin

Clearing blockages

Washing filter A

Washing filter B

Clearing obstructions from your

Motorbar™ cleaner head

Clearing blockages from your

Hair screw tool

Washing your Fluffy™ cleaner head

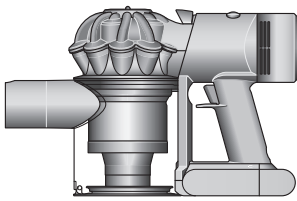
brush bar

Cleaning your tools

Looking after your machine

In the box

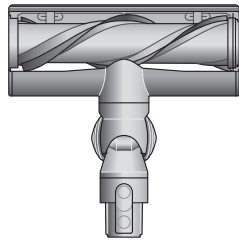
Your machine will come with one or more of these cleaner heads – not all will be included.



Main body showing the handle and bin attached.

Vacuum cleaner

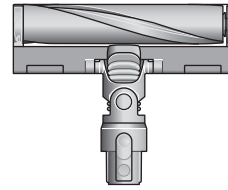
A brush bar located inside the cleaner head and a suction control slider located on the front.



Motorbar™ cleaner head

De-tangling vanes automatically clear wrapped hair from the brush bar as you clean.

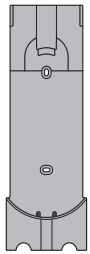
A soft fluffy brush bar housed within the cleaner head. There is an electrical connector end that can attach to the end of the wand or directly to the machine.



Fluffy™ cleaner head

Soft woven nylon removes large debris, while anti-static carbon fiber filaments extract fine dust from hard floors.

A rectangular dock that needs to be fixed to a wall with screws.



Wall dock

The Dyson cordless vacuum drops into the wall-mounted charging dock, ready for your next clean.

The charger is a one piece unit with the plug, connector end and cable.



Charger

Charges your vacuum with or without a dock.

The narrow connector end at the top, this connects to the bin and the wider end at the bottom that connects to the cleaner head or tool.



Wand

Some tools may not be included.

You can buy additional tools at www.dyson.com.

This tool has a combination of brush head and crevice tool together in one unit. The brush head slides down the crevice tool when needed.



Combination tool

Two tools in one – wide nozzle and brush, for quick switching between cleaning and dusting tasks around your home or car.

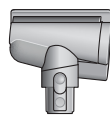


A long tool with an angled end.

Crevice tool

Engineered for precise cleaning around tricky edges and into hard-to-reach narrow spaces.

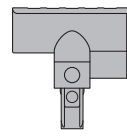
A small cleaner head with an angled body housing the motor and an electrical connector to attach to the wand or directly to the machine.



Hair screw tool

De-tangling conical brush bar spirals hair off and into the bin. Motor-driven cleaning for smaller spaces.

A small cleaner head with a body housing the motor and an electrical connector to attach to the wand or directly to the machine.



Mini motorized tool

Motorized brush bar, concentrated in a smaller head to remove stubborn dirt from mattresses, upholstery and stairs.

Pliable bristles and felt bumper strip on a narrow, tapered tool.



Soft dusting brush

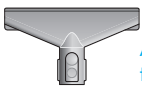
Enclosed in a skirt of soft nylon bristles for gentle, vacuum-assisted dusting of delicate objects and surfaces.

A short nozzle with stiff bristles on the underside.



Stubborn dirt brush

Stiff nylon bristles dislodge ground-in dirt from coarse carpets, high traffic areas and car interiors.



A wide, triangular shaped nozzle.

Fabric and mattress tool

Removes dust, dirt and allergens from mattresses and upholstery.

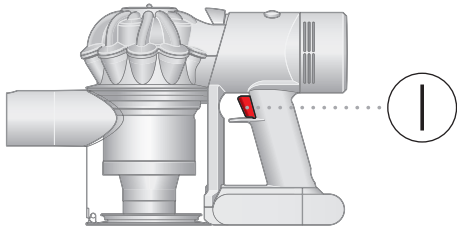


A flexible hose engineered from tough wire and durable plastic.

Extension hose

Adds up to 24 in of flexible reach to any tool attachment, to clean up high or down low in your home or car.

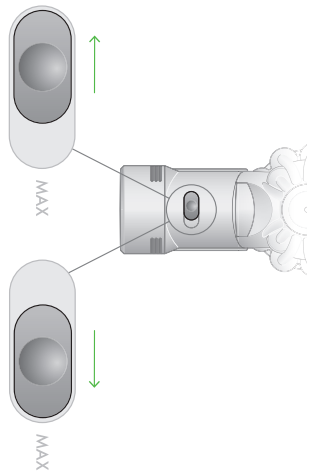
Getting started



Pull trigger to start cleaning

Two power modes

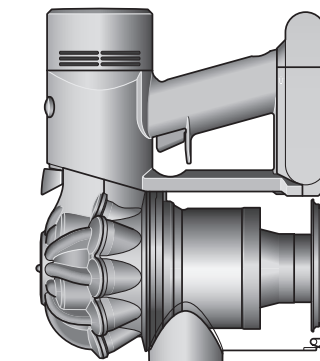
Toggle between Powerful mode – for longer suction – and MAX mode, for stronger suction. Just hold down the trigger and slide the control back and forth.



The power mode button is located on the top of the machine between the bin and filter. Slide to the left for powerful cleaning and to the right for max mode.

Switch accessories quickly

The quick-release tools click into place, and release in moments by simply depressing the release switch.



Clean awkward spaces

Remove the wand and connect your chosen tool directly to the inlet pipe to use the vacuum as a handheld.

click

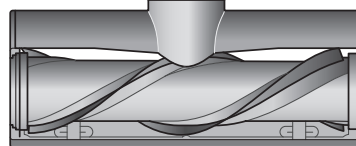
Diagram showing the connection of the wand onto the main body, with the wand release button aligned with the top of the main body.

click

A brush bar located inside the cleaner head and a suction control slider located on the front.

Motorbar™ cleaner head

De-tangling vanes automatically clear wrapped hair from the brush bar as you clean.



Pointers to demonstrate that the tools can be connected directly to the main body or to the end of the wand.

Caring for your floors

Check that the underside of the cleaner head or tool is clean and free from any objects that may cause damage.

Before vacuuming your flooring, rugs, and carpets, check the manufacturer's recommended cleaning instructions.

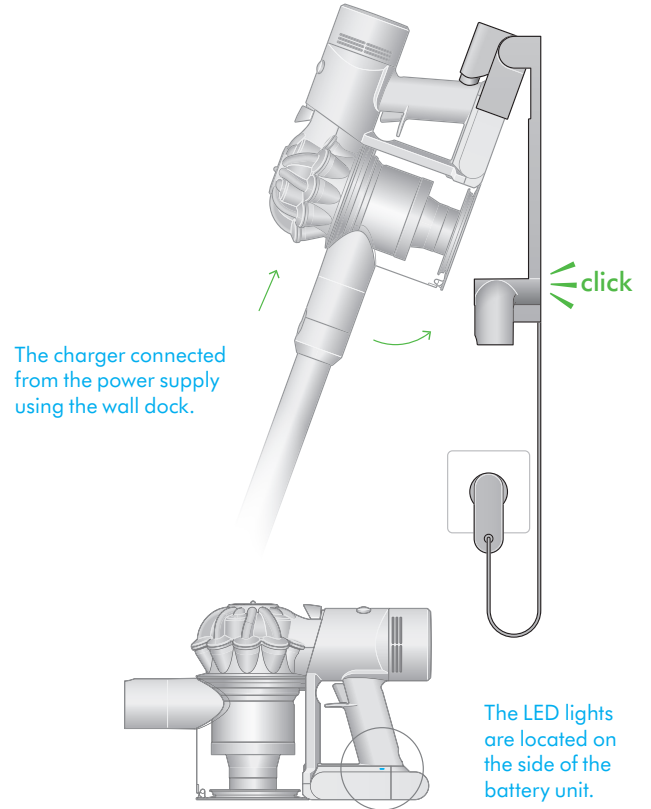
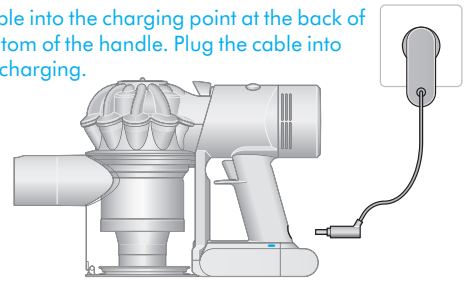
The brush bar on your machine can damage certain flooring. Some rug materials may fuzz if a rotating brush bar is used when vacuuming. If this happens, we recommend vacuuming without the motorized floor tool and consulting with your flooring manufacturer.

Charging your machine

Fully charge your machine before your first use. Connect to charger either directly or in the dock.

A full charge will take approximately 4.5 hours. While your battery is charging, the LEDs will flash with the current level of charge. These lights will turn off once your machine is fully charged.

Insert the charging cable into the charging point at the back of the vacuum, at the bottom of the handle. Plug the cable into a wall socket to begin charging.



Battery LEDs

During use, high charge.

All LEDs lit with a solid blue light.



During use, medium charge.

Two LEDs lit with a solid blue light.



During use, low charge.

One LED lit with a solid blue light.



Empty.

One blue LED flashing.



Charging LEDs

Charging, low charge.

One flashing blue light on the side of the battery.



Charging, medium charge.

Two flashing blue lights on the side of the battery.



Charging, nearly full.

Three flashing blue lights on the side of the battery.



Fully charged.

No lights illuminated on the side of the battery.



Battery fault.

One flashing red LED.



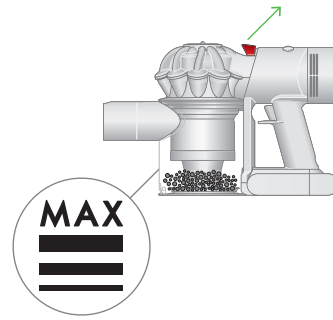
Charger fault.

One light flashing alternately red and blue.



Emptying your bin

Empty as soon as the dirt reaches the MAX level – don't overfill. Using your machine when the dirt is above the MAX line may affect the performance and require more frequent filter washing.

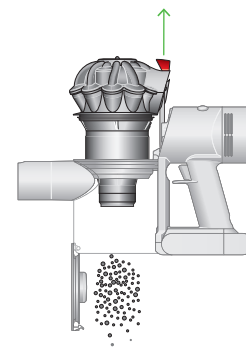


The MAX mark on the bin of the machine, showing that the dirt should not be filled over the Max mark when the machine is at the angle of normal use.

Release the dirt

Remove the wand from your machine.

Hold your machine over the bin and pull the bin release catch upwards. The cyclone will slide up and the bin base will open.



The bin release catch is located on the top of the cyclone where it joins the main body of your machine.

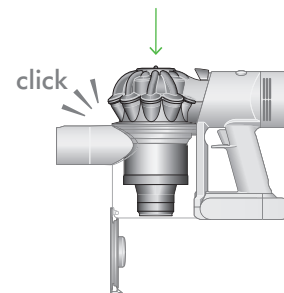
Minimize dust contact

Cover your bin tightly in a dustproof bag while you empty. Remove the bin carefully, seal the bag tightly and dispose.

Close the bin

Push down on the cyclone until it slides into position.

Push the bin base upwards until it closes securely.



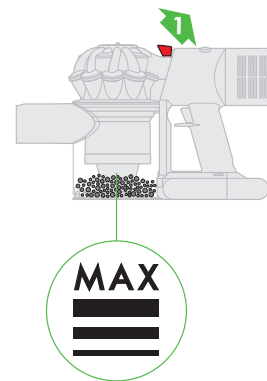
Cleaning your bin

Empty your bin as soon as the dirt reaches the MAX mark.
You may need to clean the filter more often if you use your machine with a full bin.

Empty your bin

Remove the wand from your machine.

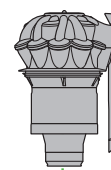
Hold your machine over a bin and pull the bin release catch upwards.
The cyclone will slide up and the bin base will open.



Remove the cyclone

Pull the bin release catch upwards. The cyclone will slide up and the bin base will open.

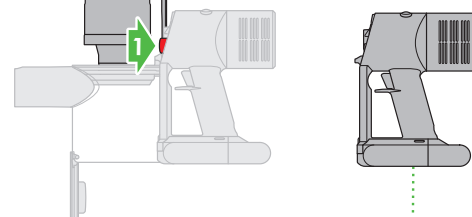
Locate the cyclone release button behind the cyclone and push to remove the cyclone from your machine.



The cyclone release button is located on the main body and is visible once the bin release button has been activated. The button to remove the bin is located on the bottom of the handle.

Remove the bin

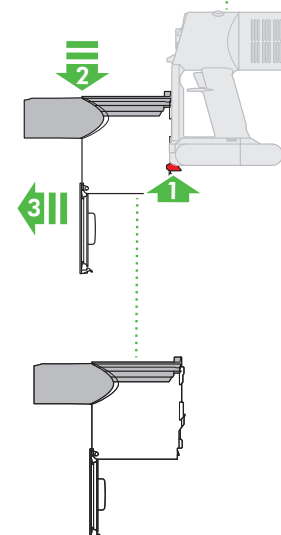
Pull back on the red catch located on the base, slide the bin down and pull it off your machine.



Clean the bin

Wipe your bin with a damp, lint-free cloth. Don't put the bin in a dishwasher or use detergents, polishes or air fresheners.

Make sure the bin is completely dry before replacing.



Replace the bin

Align the tabs on the bin with the grooves on the main body and slide it upwards until it clicks into place.

Replace the cyclone

Slide the cyclone into the grooves of the main body and push down until it is in position.

Push the bin base up until it clicks firmly shut.

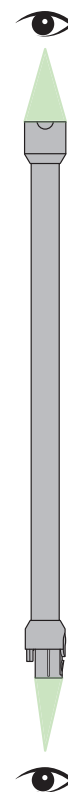
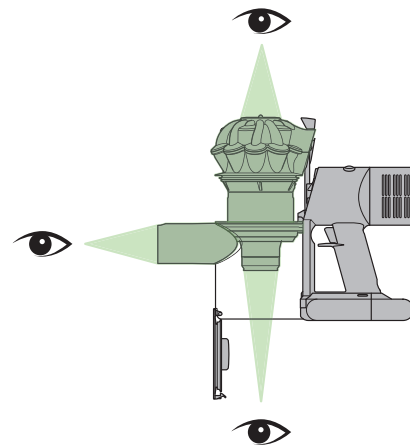
Clearing blockages

Your machine is fitted with an automatic cut-out. If any part of it is blocked, your machine's motor will pulse and won't function until the blockage has been cleared.

Disconnect your machine from the charger before looking for blockages. Be careful not to touch the trigger and be aware of sharp objects.

Leave your machine to cool down before looking for blockages.

Don't use your machine when looking for blockages as this could cause injury.



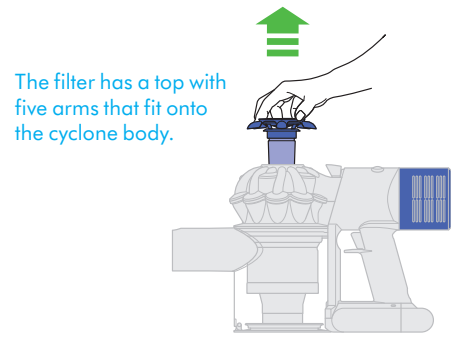
With the wand removed from the machine, check for blockages at both ends of the wand.

Washing filter A

Remove your filter

Lift the filter out of the top of the cyclone.

Tap to remove excess dust and debris.



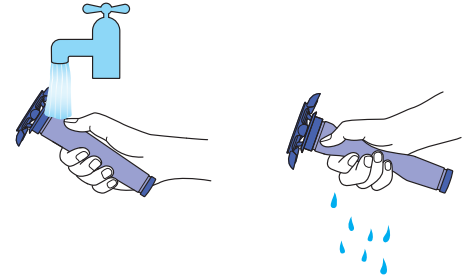
Wash your filter

Hold the open end of the filter under a running tap, until the water runs clear.

Turn the filter upside down and tap it to remove excess water.

Run water over the outside of the filter until the water runs clear.

Squeeze and twist with both hands to make sure the excess water is removed.

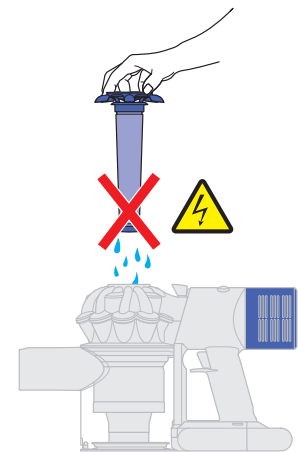
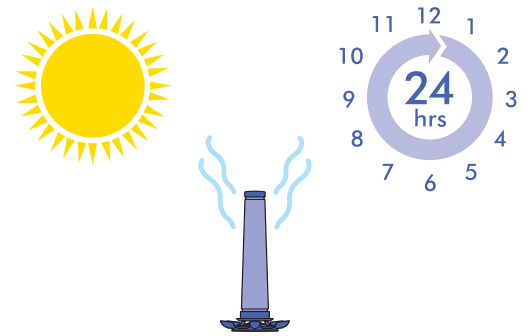


Dry your filter

Leave your filter to dry for at least 24 hours in a well-ventilated, warm place.

Do not dry your filter in a tumble-dryer or near a naked flame.

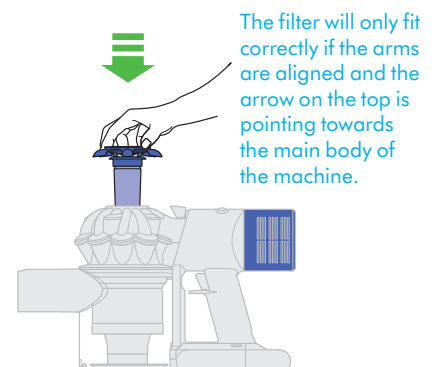
Important: your filter must be completely dry before you put it back into the machine. Your machine could be damaged if used with a damp filter.



Reassemble your machine

Align the arrow on the top of the filter with the bin release button.

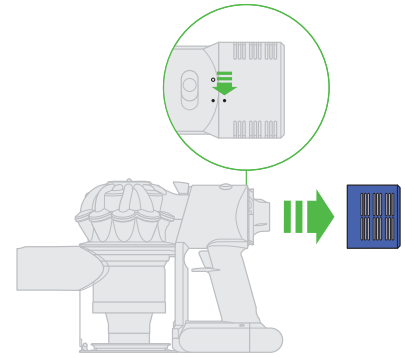
Push down to fit securely in place.



Washing filter B

Twist off your filter

Twist your filter counter-clockwise and pull it away from your machine.



Wash your filter

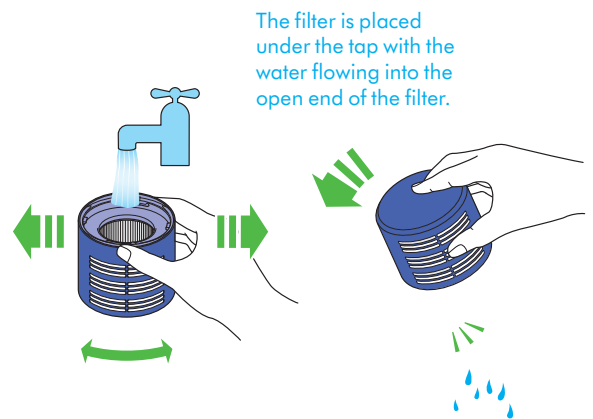
Wash the inside of the filter under cold, running water, rotating the filter to make sure all the inside is clean.

Repeat until the water runs clear.

Shake out the water

Empty the filter and shake firmly to remove excess water.

Keep shaking it until there's no water coming from the filter.



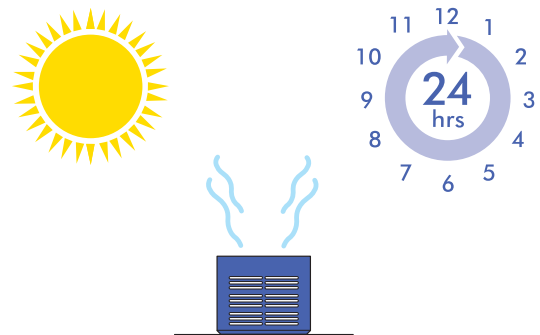
Dry your filter

Place your filter, with the open end facing up, to dry.

Leave your filter to dry for at least 24 hours in a well-ventilated, warm place.

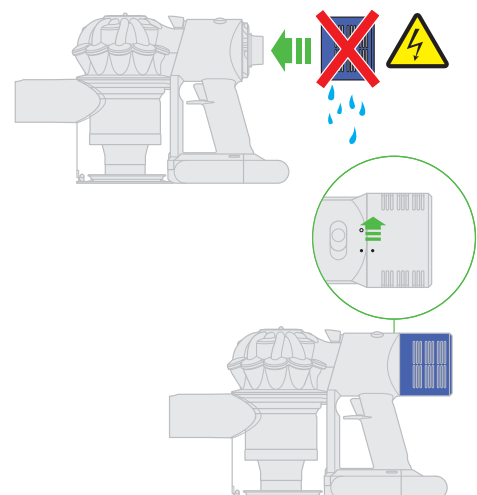
Do not dry your filter in a tumble-dryer or near a naked flame.

Important: your filter must be completely dry before you put it back into the machine. Your machine could be damaged if used with a damp filter.



Reassemble your machine

Place your filter on your machine, aligned in the open position. Twist clockwise until it clicks securely into position.



Clearing obstructions from your Motorbar™ cleaner head

Your Motorbar™ cleaner head doesn't have a washable brush bar. To maintain optimum performance, check your brush bar regularly and clear any obstructions.

Make sure your machine is disconnected from the charger and take care not to touch the trigger.



Remove your brush bar

Don't put any part of your machine in a dishwasher or use detergents, polishes or air fresheners.

Press the cleaner head release button on the end of the wand. Place the cleaner head upside down.

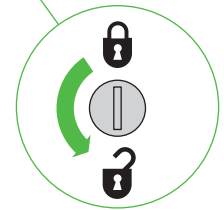
Use a coin to unlock the end cap.

Twist the end cap and remove it from your brush bar. Don't wash the end cap.

Slide your brush bar out of the cleaner head.



The removal of the brush bars showing the lock in a horizontal position and the unlock symbol in the 6 o'clock position and the lock symbol in the 12 o'clock position.



Look for obstructions

Clear any debris from your brush bar.

Check inside the cleaner head and remove any debris or blockages.

Your Motorbar™ cleaner head and brush bar aren't washable. Wipe over with a damp lint-free cloth.

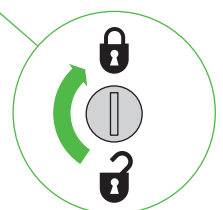
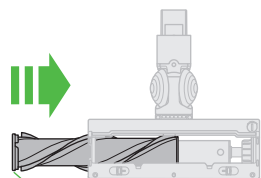
Replace your brush bar

Push the end cap back on to your brush bar and slide it back into the cleaner head.

Turn the end cap clockwise into the locked position.

Your cleaner head isn't washable and should only be wiped over with a damp lint-free cloth.

The brush bar reinserted into the cleaner head and the end cap rotated to the locked position.



Clearing blockages from your Hair screw tool

Your Hair screw tool doesn't have a washable brush bar. To maintain optimum performance, check your brush bar regularly and clear any obstructions.

Make sure your machine is disconnected from the charger and take care not to touch the trigger.

Remove the cover and brush bar

Remove the Hair screw tool from the wand or machine.

Push the base plate open. Press the red lever down to release the cleaner head cover.

Pull the cleaner head cover off the main body of the tool.

Look for obstructions

Pull your brush bar firmly to remove it from the main body.

Check and remove any obstructions from all three parts of your Hair screw tool.

Your Hair screw tool isn't washable. Wipe over with a damp lint-free cloth.

Don't put any part of your machine in a dishwasher or use detergents, polishes or air fresheners.

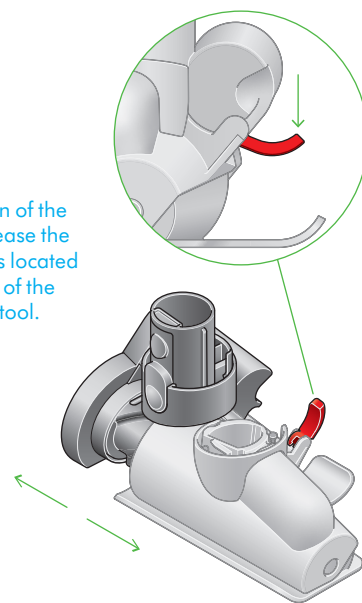
Re-assemble Hair screw tool

Put your brush bar back into position and press firmly until it clicks back into position.

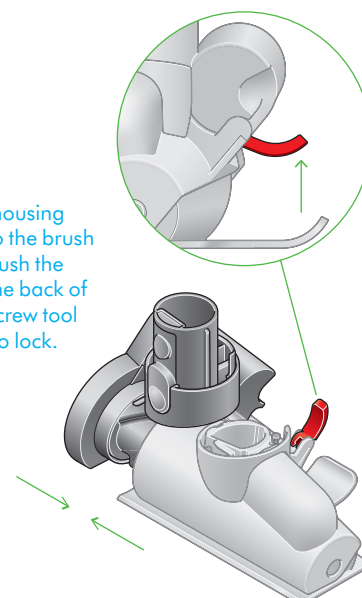
Check the red locking lever is in the unlocked position. Align the cleaner head cover with the guide on the main body. Push it down until it clicks into position.

Push the red locking lever up until it clicks into position and push the base plate back into place.

The location of the lever to release the brush bar is located at the back of the Hair screw tool.



Slide the housing back on to the brush bar and push the lever on the back of the Hair screw tool upwards to lock.



Washing your Fluffy™ cleaner head brush bar

Your Fluffy™ cleaner head has a washable brush bar. To maintain optimum performance, check and wash your brush bar regularly.

Make sure your machine is disconnected from the charger and take care not to touch the trigger.

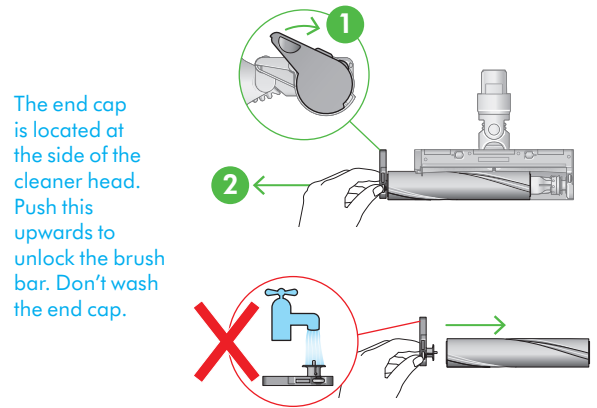
Remove your brush bar

Don't put any part of your machine in a dishwasher or use detergents, polishes or air fresheners.

Press the cleaner head release button on the end of the wand. Place the cleaner head upside down.

Push the end cap up fully and pull the brush bar out of the cleaner head.

Remove the end cap from the brush bar. Don't wash the end cap.



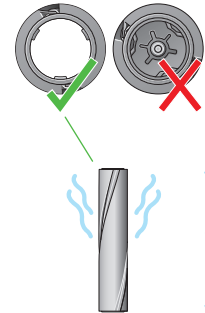
Wash and dry your brush bar

Hold your brush bar under running water and gently rub to remove any lint or dirt.

Remove as much excess water as possible, run your hand down the length of the brush bar to squeeze out the water.

Stand your brush bar upright, with the closed end at the top. Leave to dry completely for at least 24 hours.

The two ends of the main brush bar showing the closed in end being the correct one to have facing upwards when leaving the brush bar to dry.



The brush bar has an open end and a closed end. Stand upright, with the closed end facing upwards, to dry.

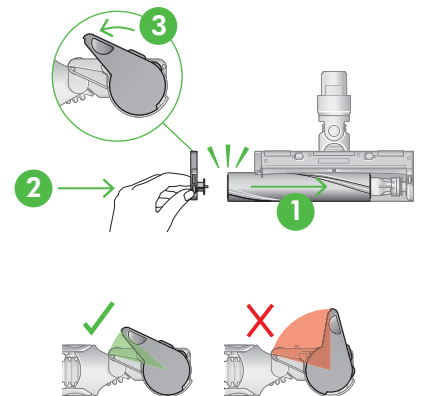
Replace your brush bar

Before replacing, check that your brush bar is completely dry.

Reattach the end cap to your brush bar.

Slide your brush bar into the cleaner head. Push the end cap back down to the closed position.

The end cap should be attached to the cleaner head at an angle less than 90°, any angle greater than this will not allow the end cap to close.



The brush bar reinserted into the cleaner head and the end cap rotated to the locked position.

Cleaning your tools

Don't put any part of your machine in a dishwasher or use detergents, polishes or air fresheners.

Wipe with a damp, lint-free cloth, without touching the connector end.

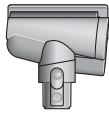
Make sure your tools are completely dry before using.



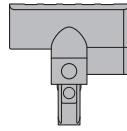
Combination tool



Crevice tool



Hair screw tool



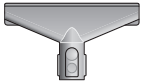
Mini motorized tool



Soft dusting brush



Stubborn dirt brush



Fabric and mattress tool



Extension hose

Looking after your machine

To always get the best performance from your machine, it's important to clean it regularly and check for blockages.

Look after your machine

If your machine is dusty, wipe with a damp lint-free cloth.

Check for blockages in the cleaner head, tools and main body of your machine.

Wash your filter regularly and leave to dry completely.

Don't use detergents or polishes to clean your machine.

Look after your battery

To get the best performance and life from your battery, use Powerful suction mode.

Your machine won't operate or charge if the ambient temperature is below 5°C (41°F). This is designed to protect both the motor and battery.

Your serial numbers

You can register your machine using the serial number found on the bottom of your machine.

You can find your serial numbers on your machine, battery and charger. Use your serial number to register.